

Mitra-Clip Case

Marvin H. Eng MD FACC FSCAI

Structural Heart Disease Fellowship and Research Director

Henry Ford Hospital

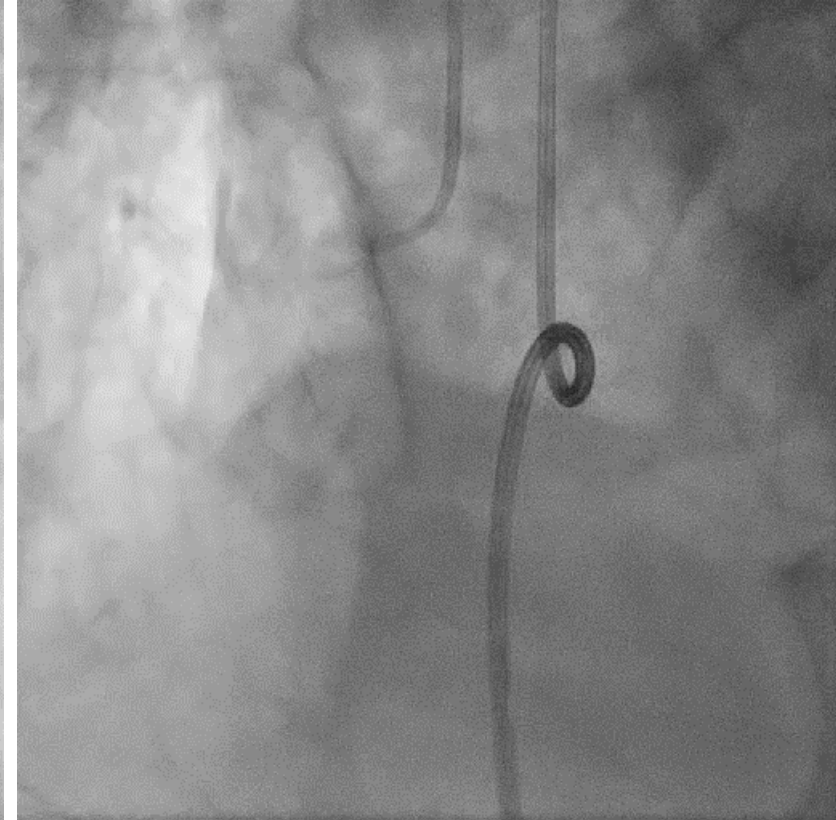
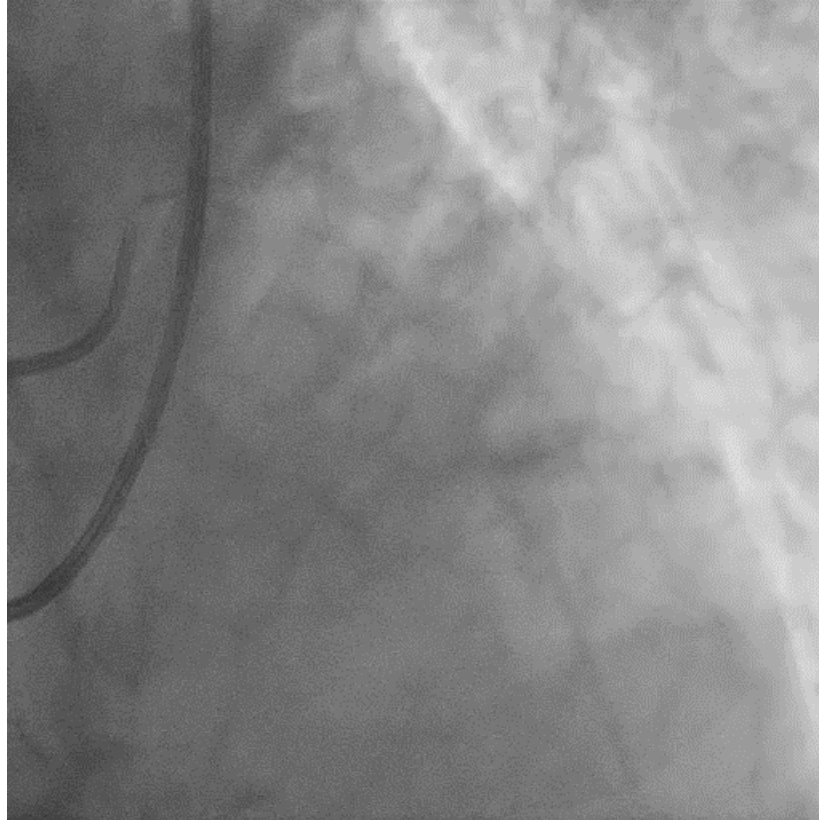
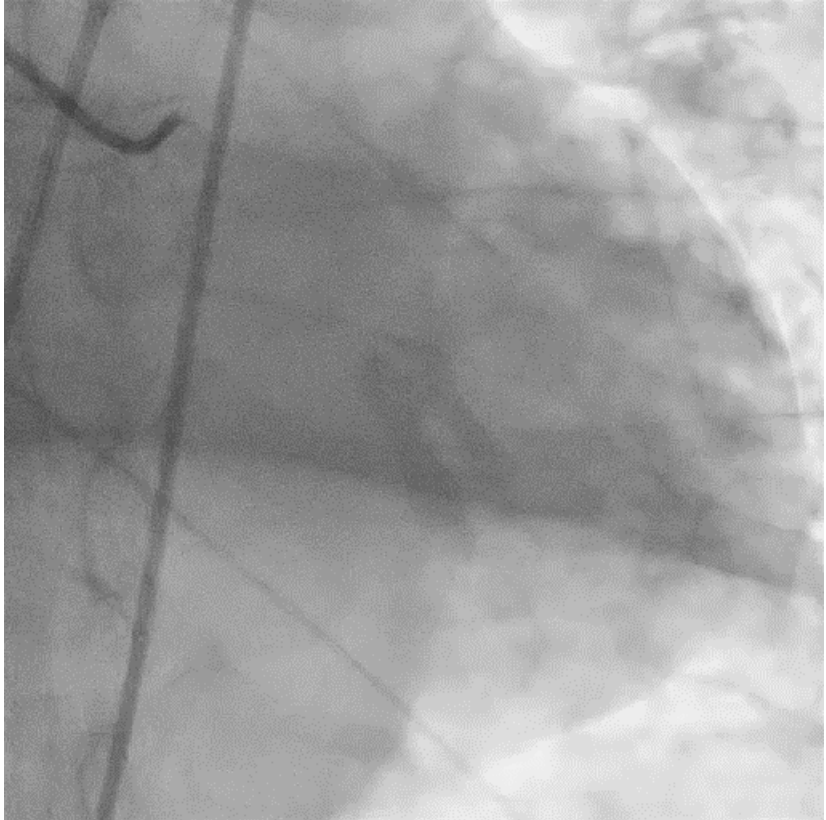
Detroit, MI

DISCLOSURES

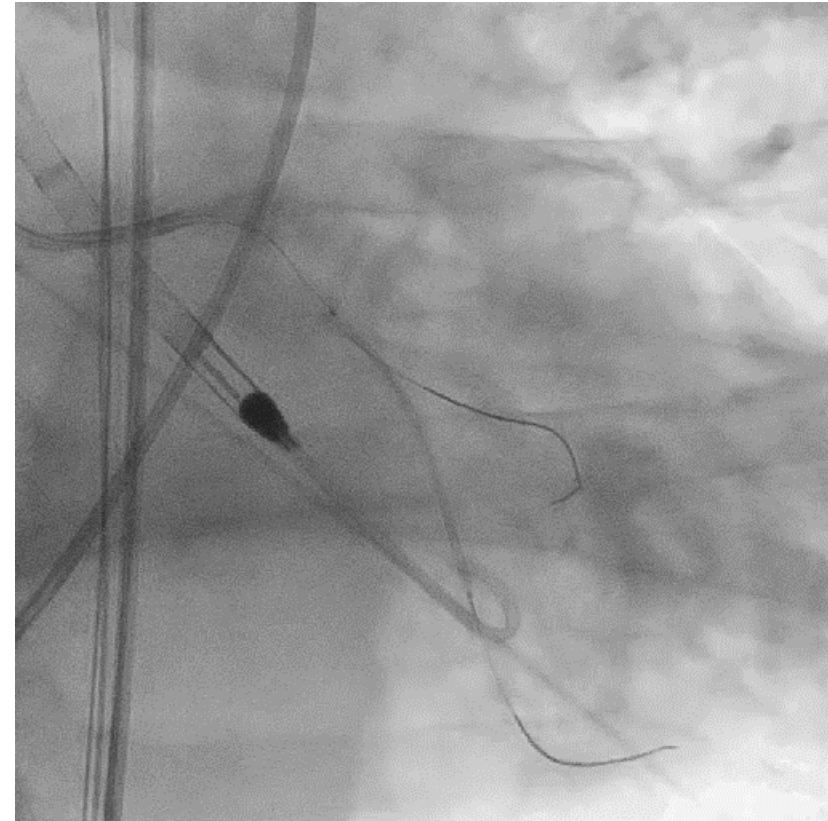
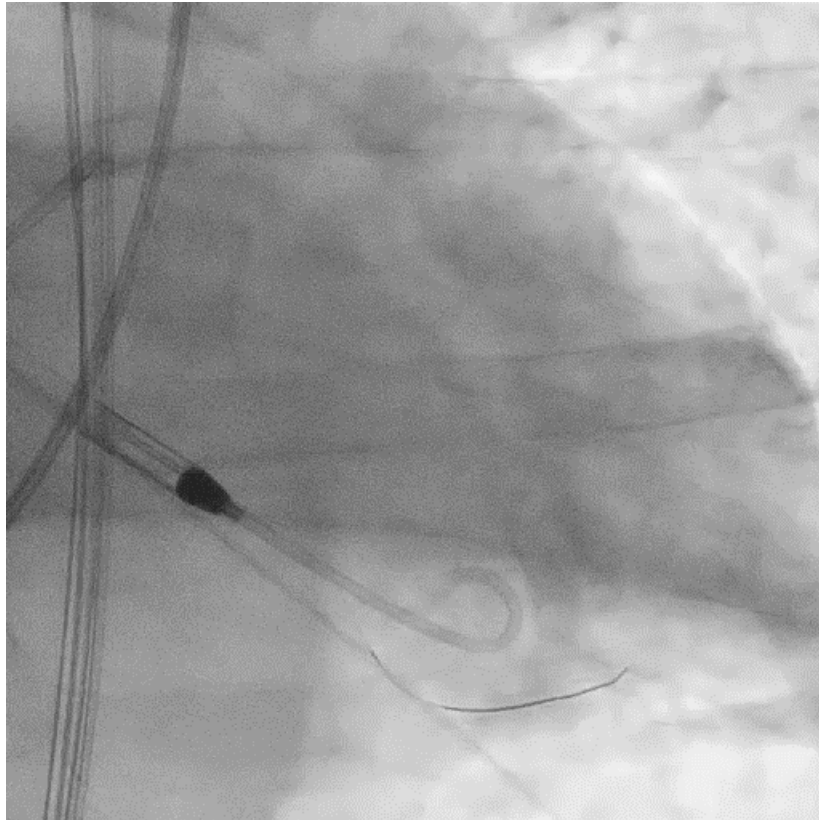
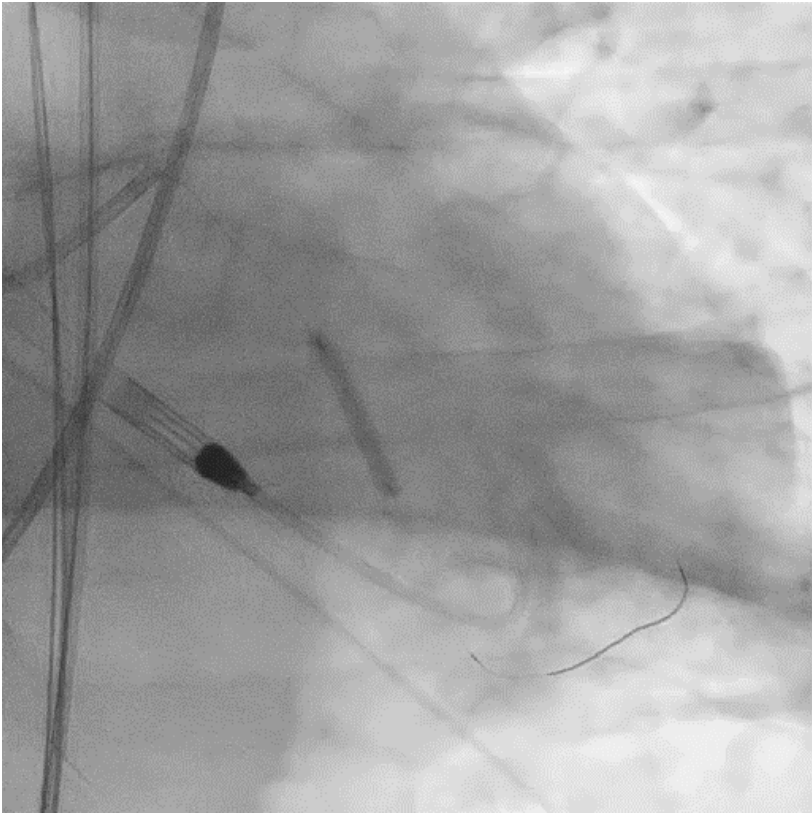
- Clinical Proctor for Edwards Lifesciences

65 yo M

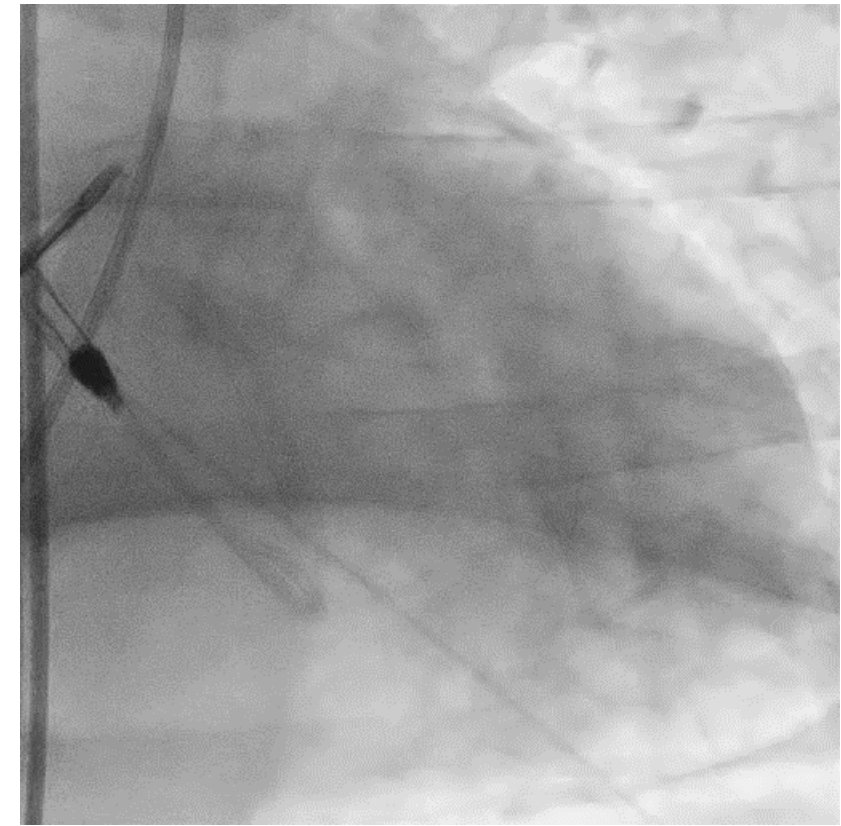
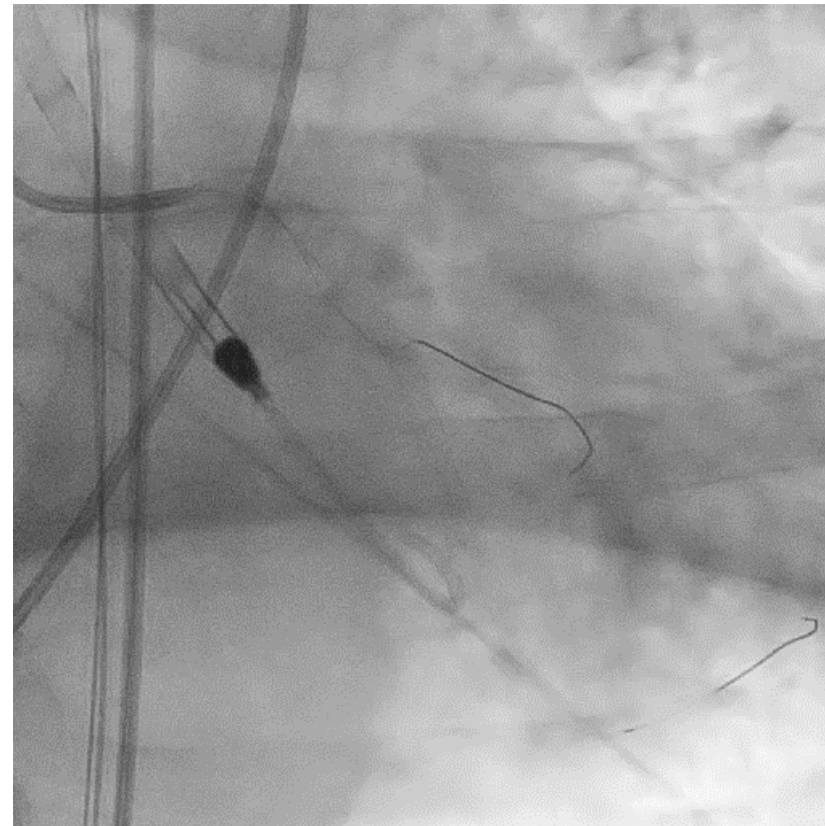
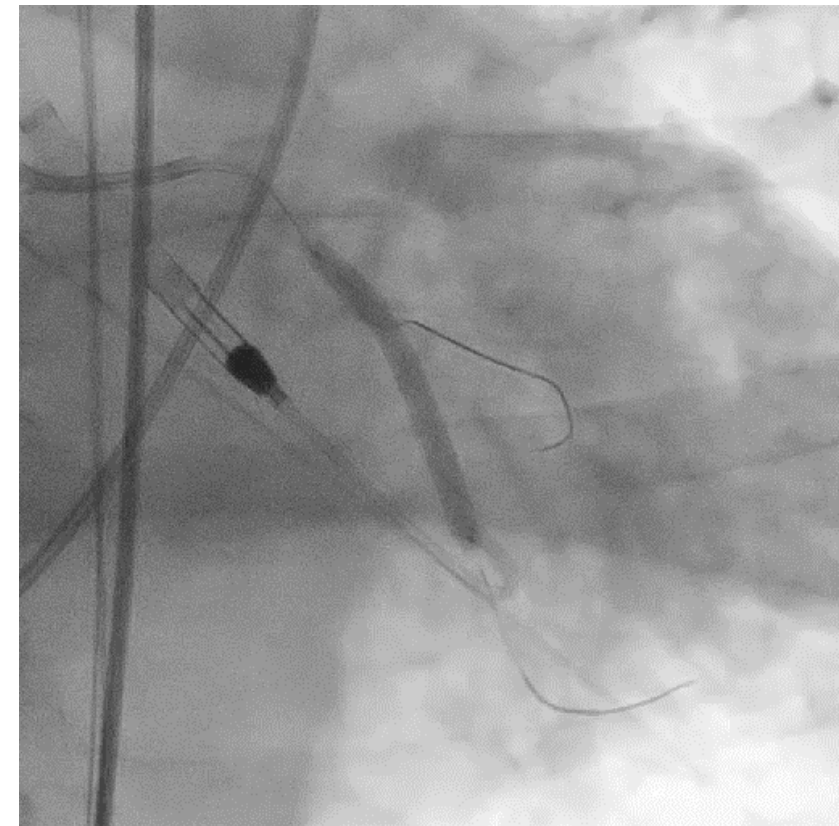
Chest pain with Lateral ST elevation



Predilatation Synergy 3.5x 32mm



Initial no reflow

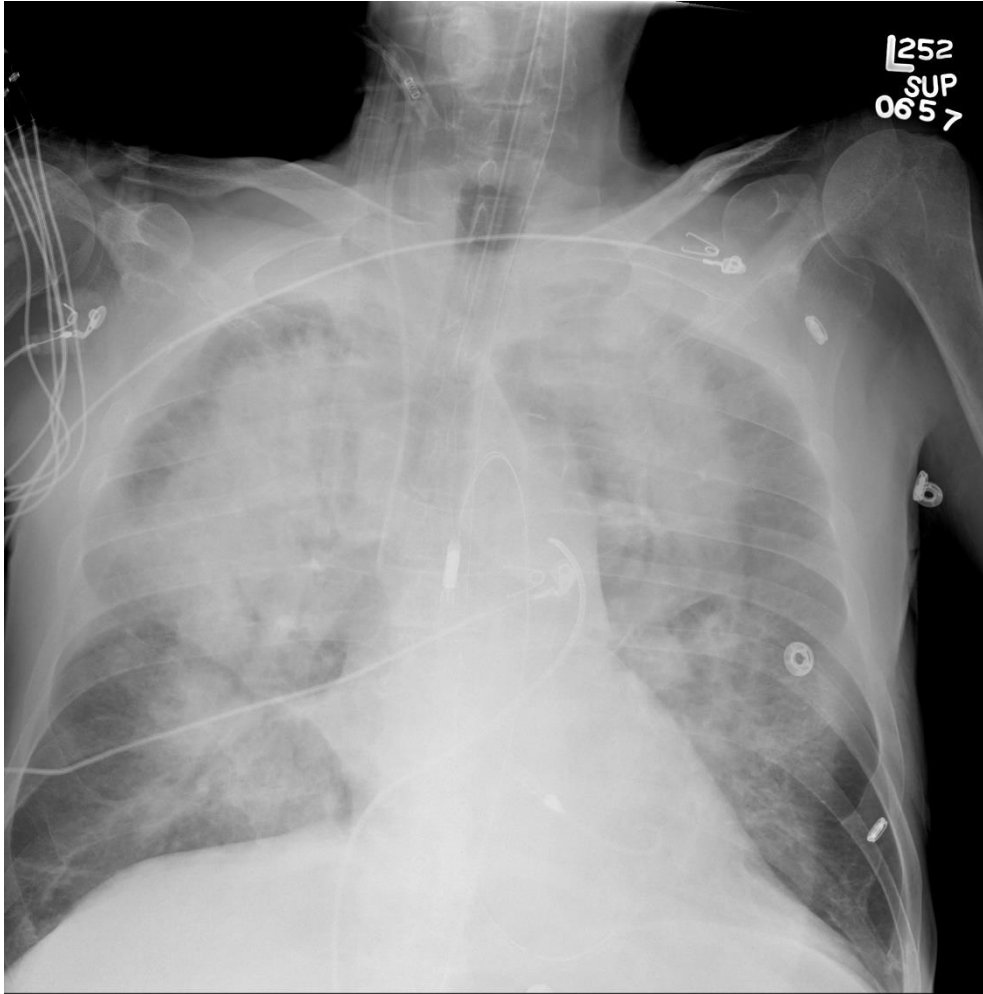


Refractory Pulmonary Edema

FiO₂ 100% with PEEP 15 cm



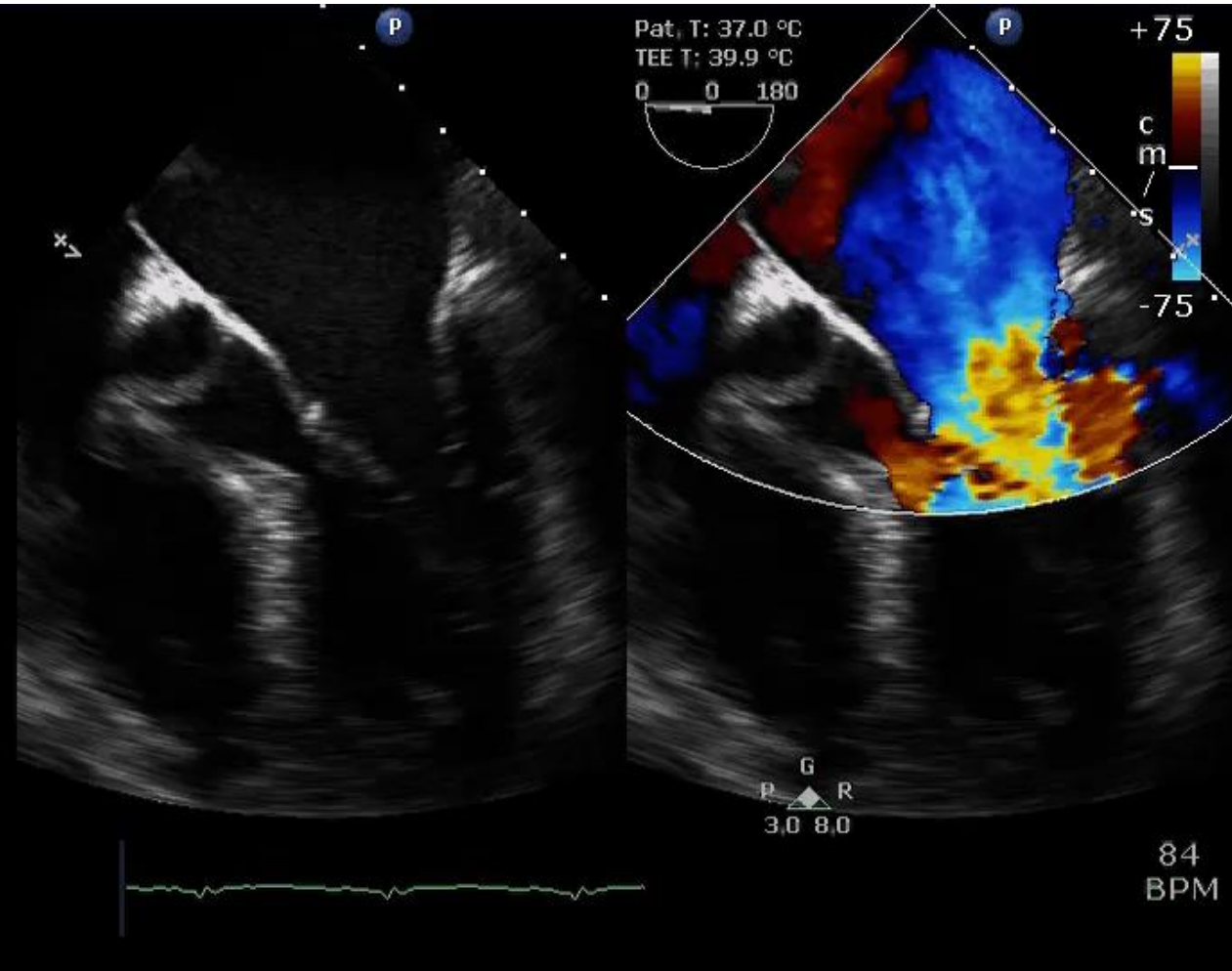
Hemoptysis noted in the ETT



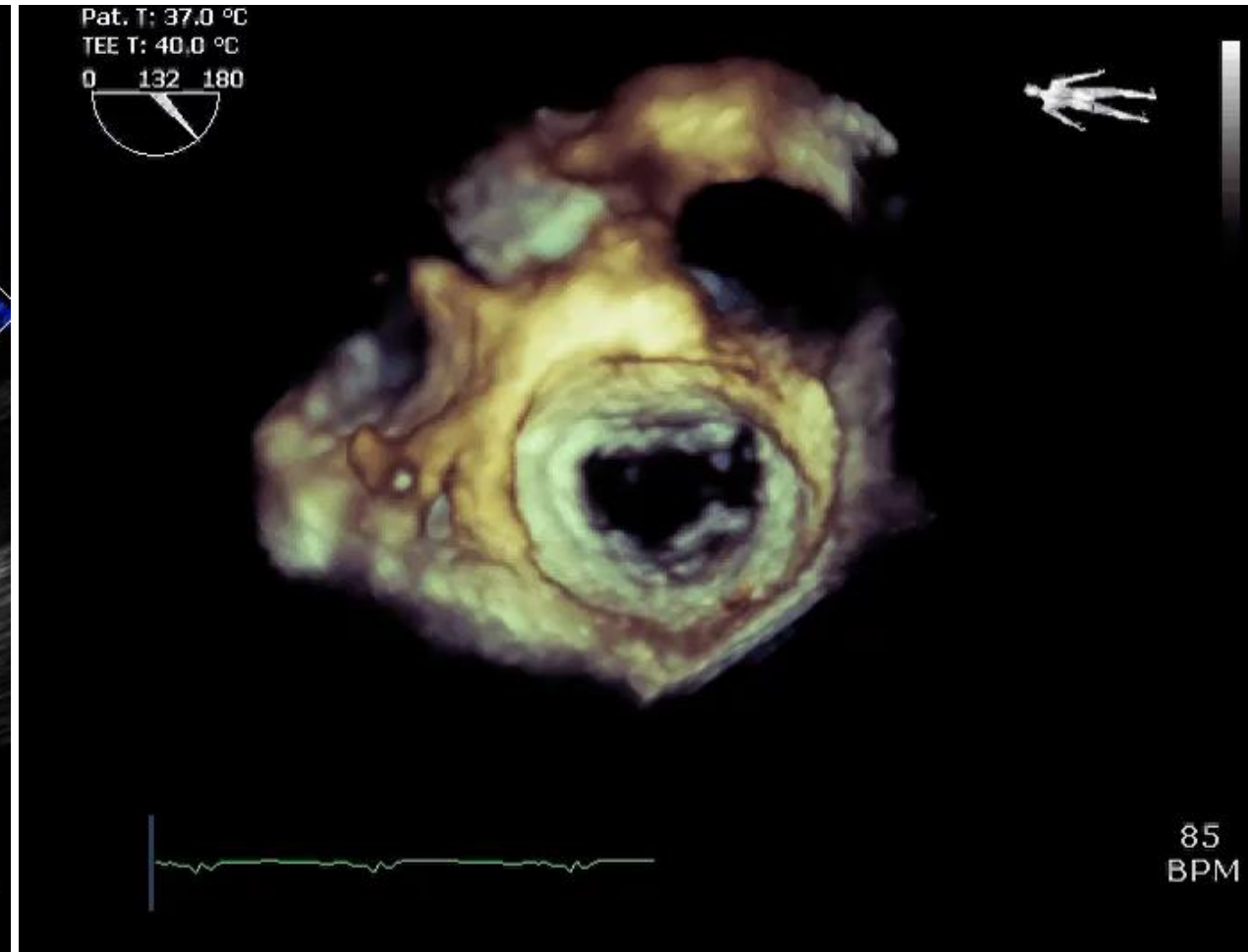
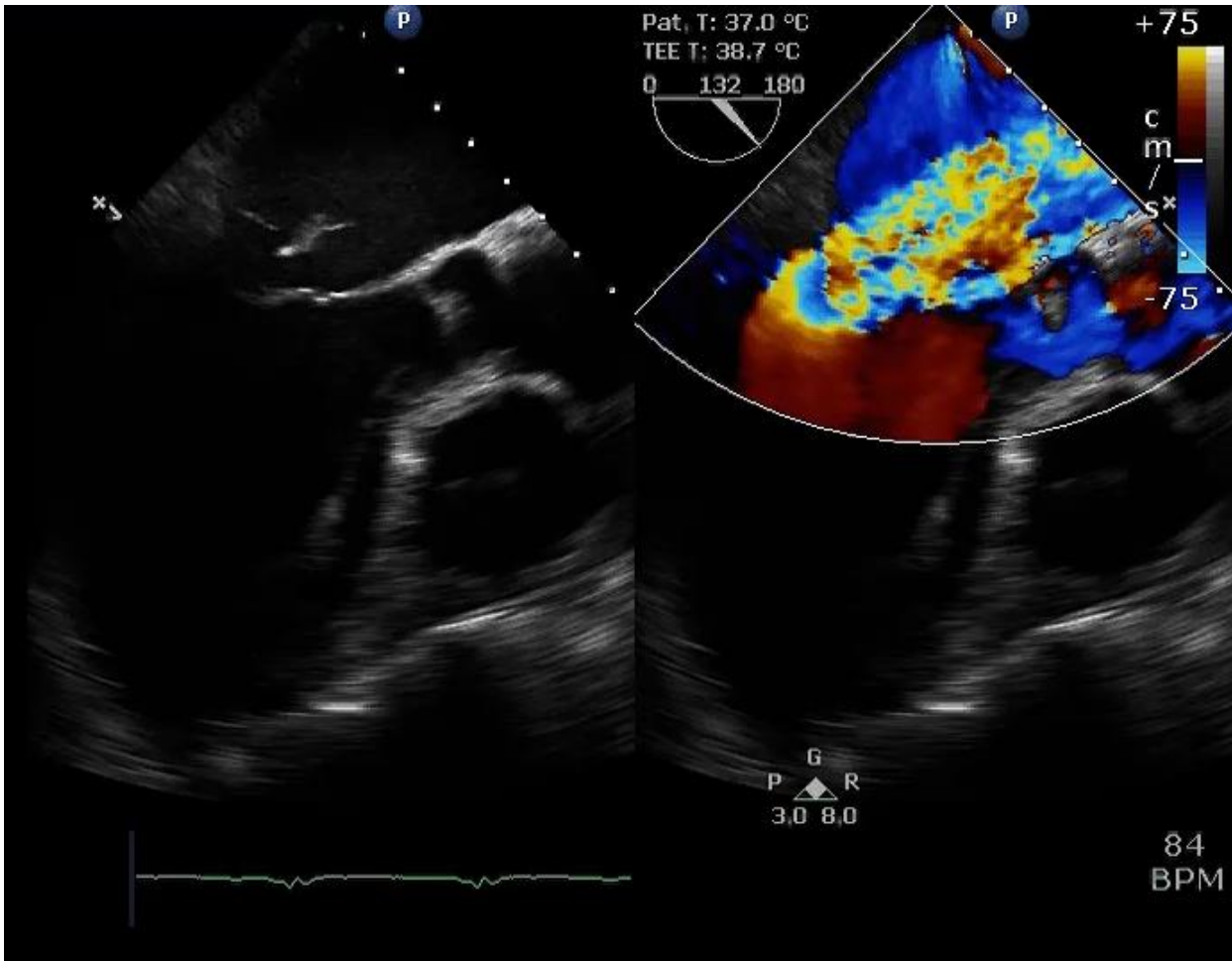
HFHS TEE
X7-2t
11 Hz
14.0cm

2D
Gen
Gn 50
C 46
4/4/0
50 mm/s

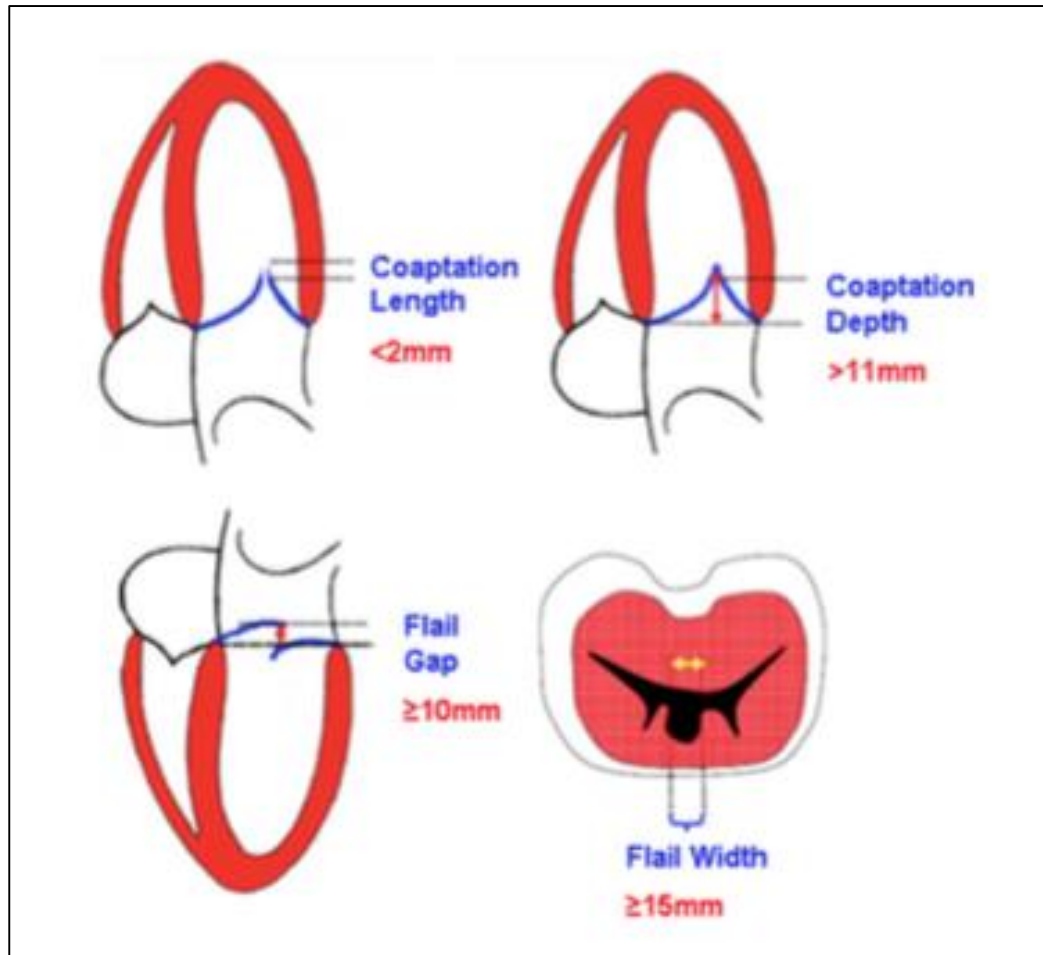
Color
3.3 MHz
Gn 60
4/5/0
Filtr Med



Papillary Muscle Rupture



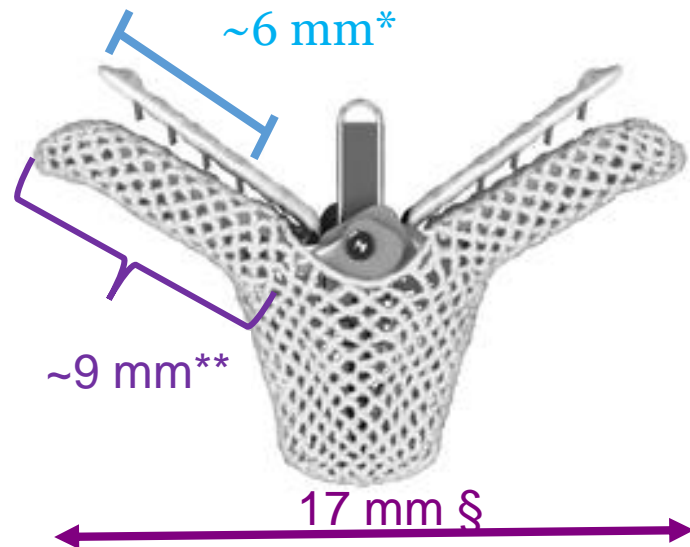
Mitra Clip Anatomic Exclusions



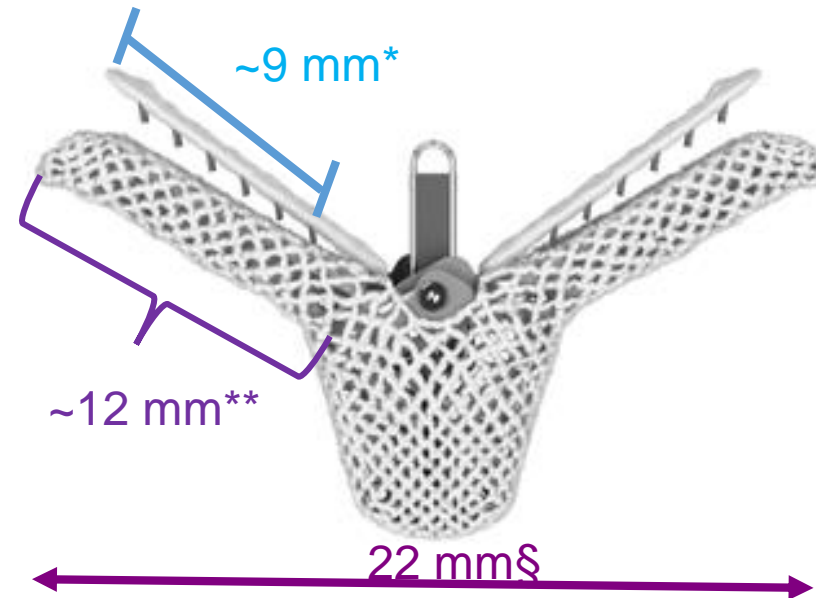
- MVA $< 4 \text{ cm}^2$
- Leaflet Ca++
- Severe retracted posterior leaflet

Mitra-Clip New Generation

MitraClip NT / NTR



MitraClip XTR



*Leaflet insertion needed to engage all frictional elements

**Clip arm length § Clip arm span at 120 degrees

XTR

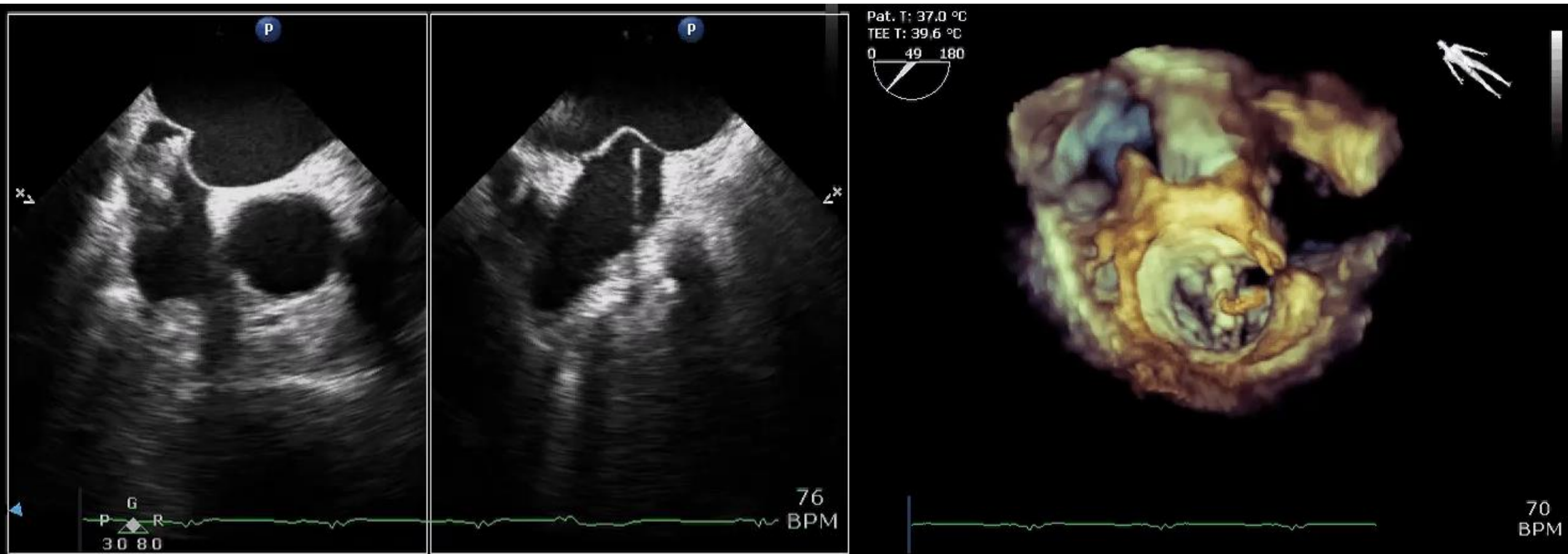
Outcomes



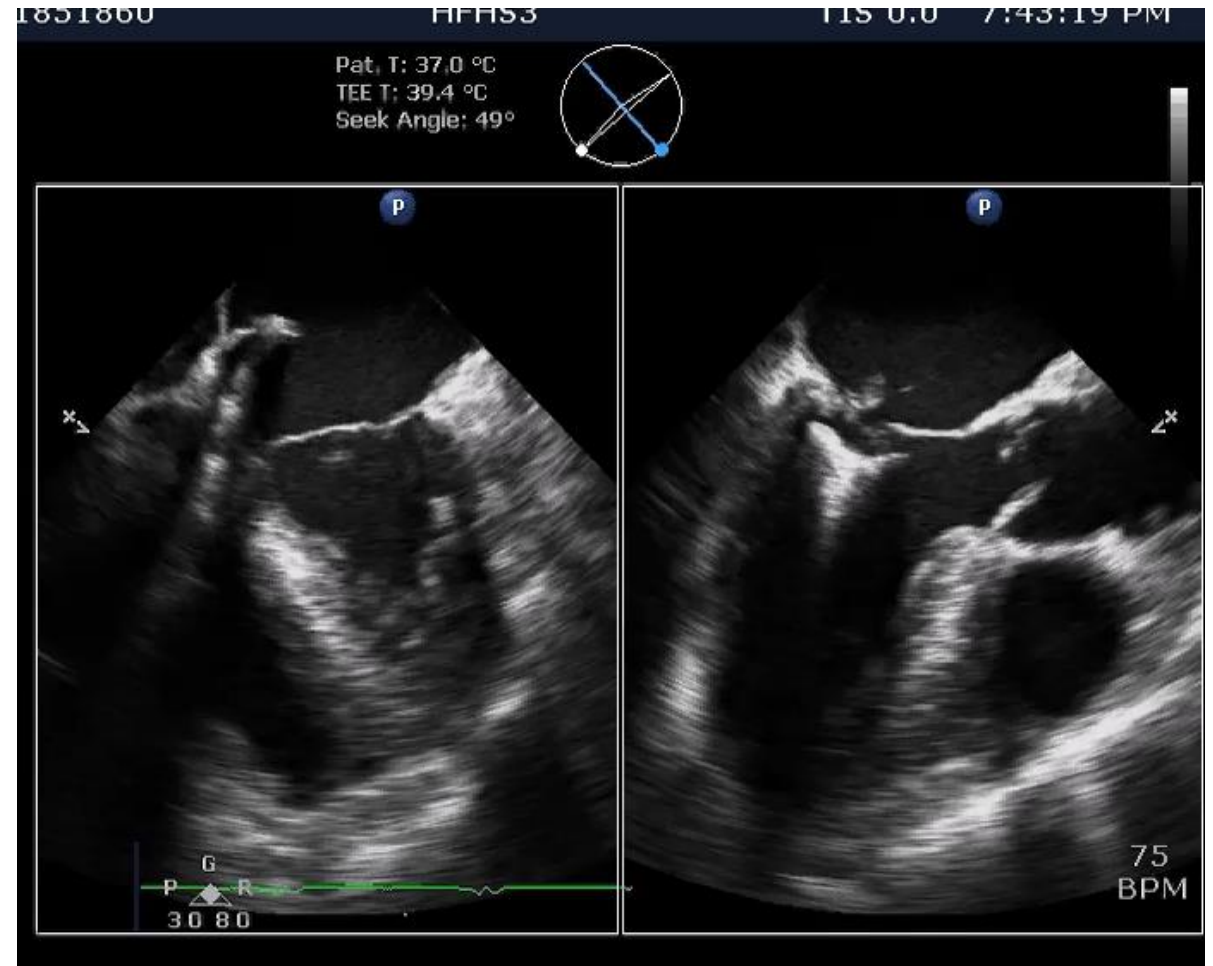
Procedural duration, min	83 ± 45
Fluoroscopy time, min	15 ± 12
Technical success*	100 (93)
Procedural death	0
Single-leaflet device attachment	4 (4)
Isolated leaflet damage	2 (2)
Conversion to open heart surgery	4 (4)
Device embolization	0
Tamponade	0
Major access-site bleeding	3 (3)
Cerebrovascular event	0
Implantation of more than 1 device	46 (43)
Combination NTR/XTR	22 (21)
Echocardiographic result at discharge	n = 102
MR grade at discharge	
0+	4 (4)
1+	75 (73)
2+	16 (16)
3+	5 (5)
4+	2 (2)
Mean mitral valve gradient at discharge, mm Hg	3.5 ± 1.8

Transseptal Puncture

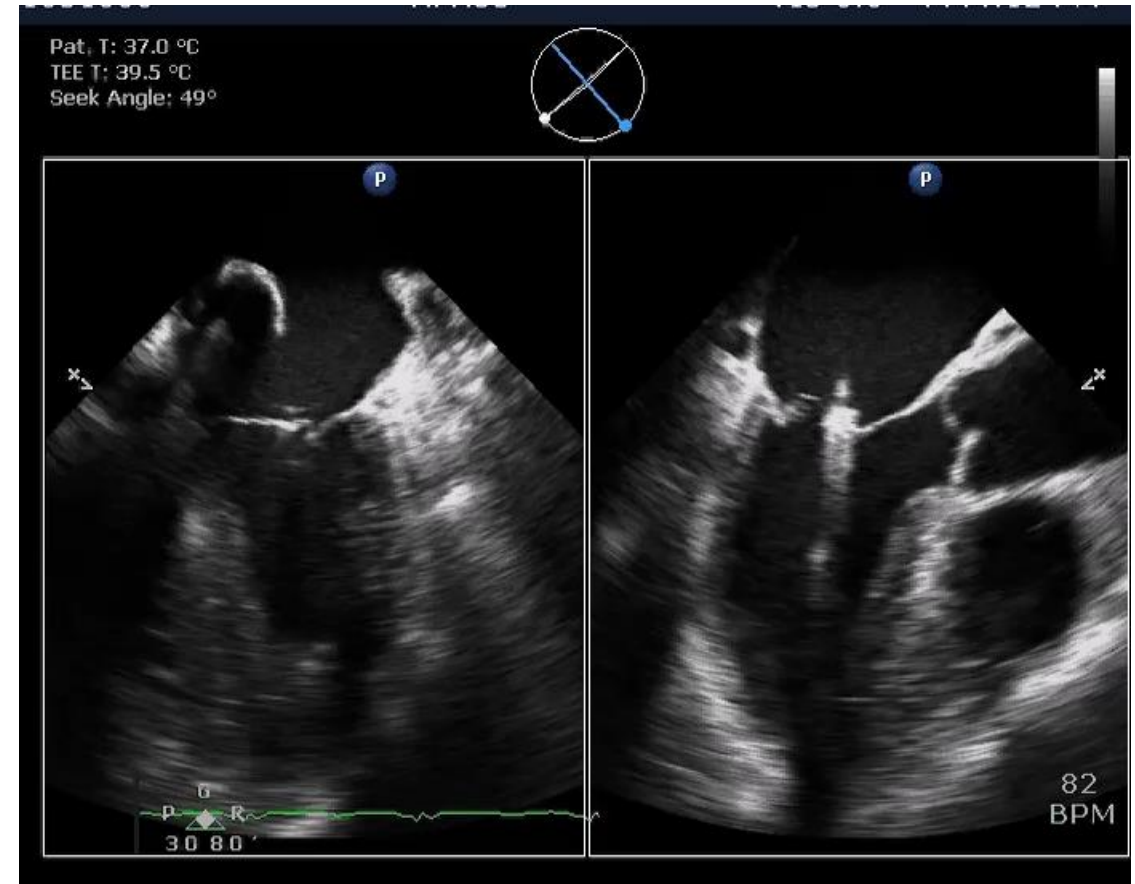
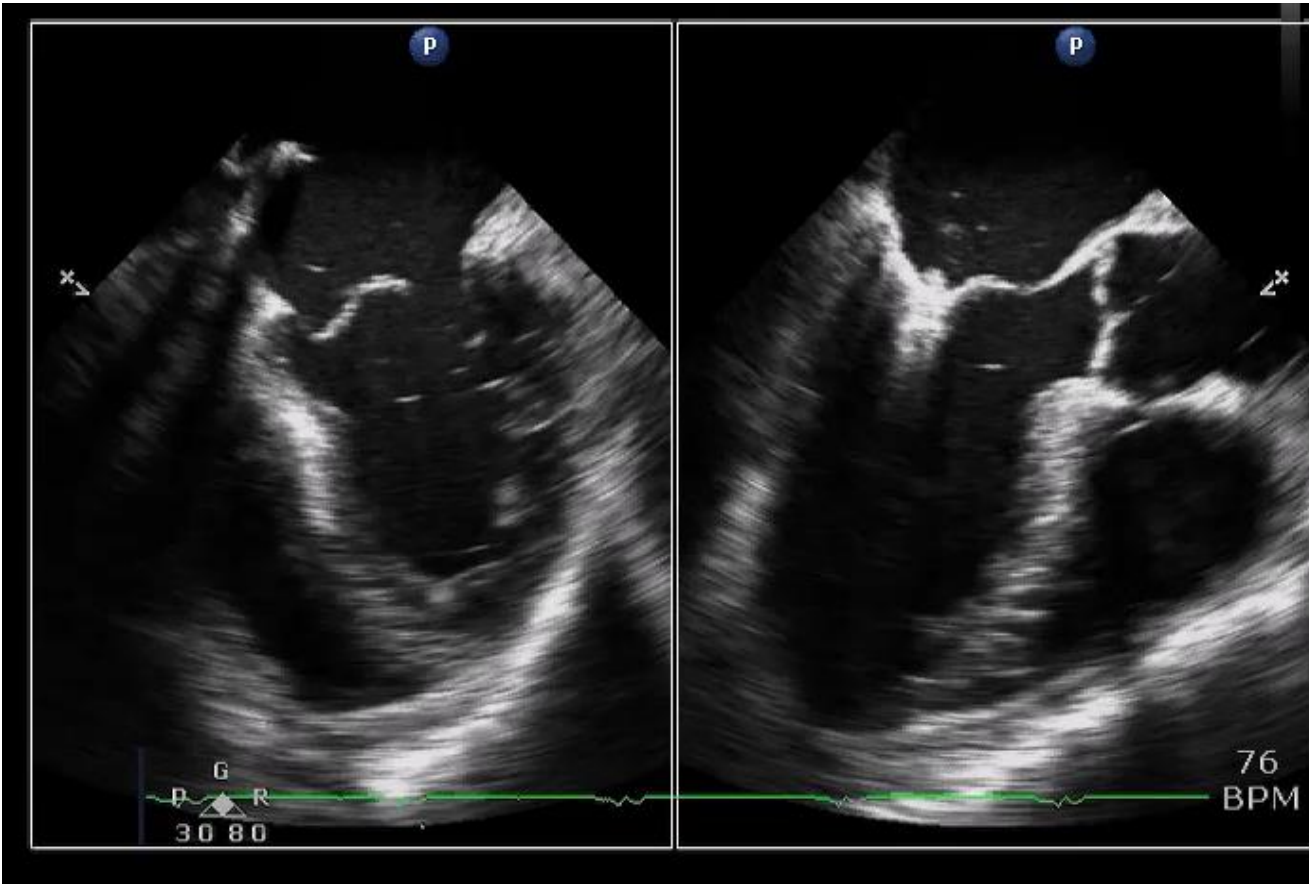
Left atrial navigation



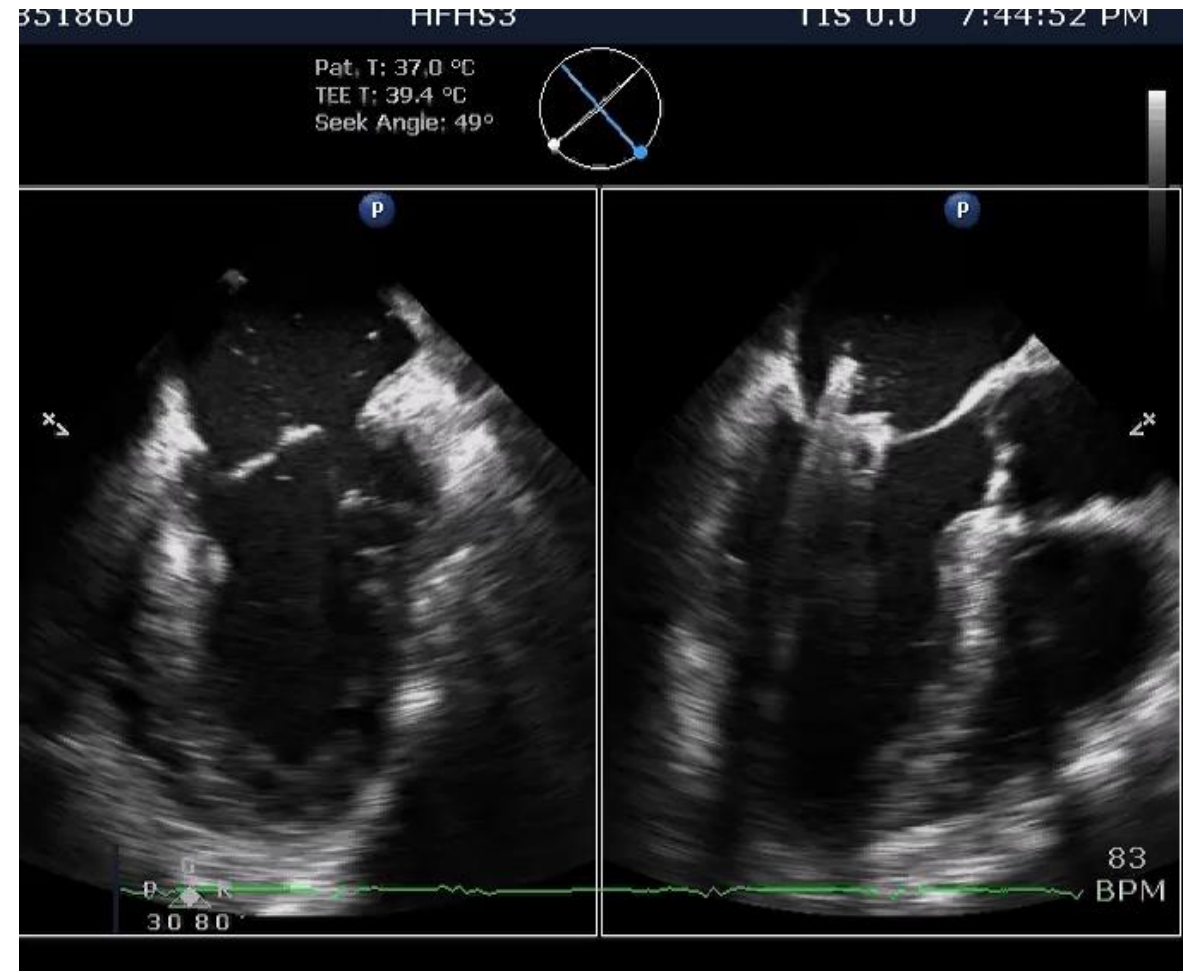
Optimizing Trajectory



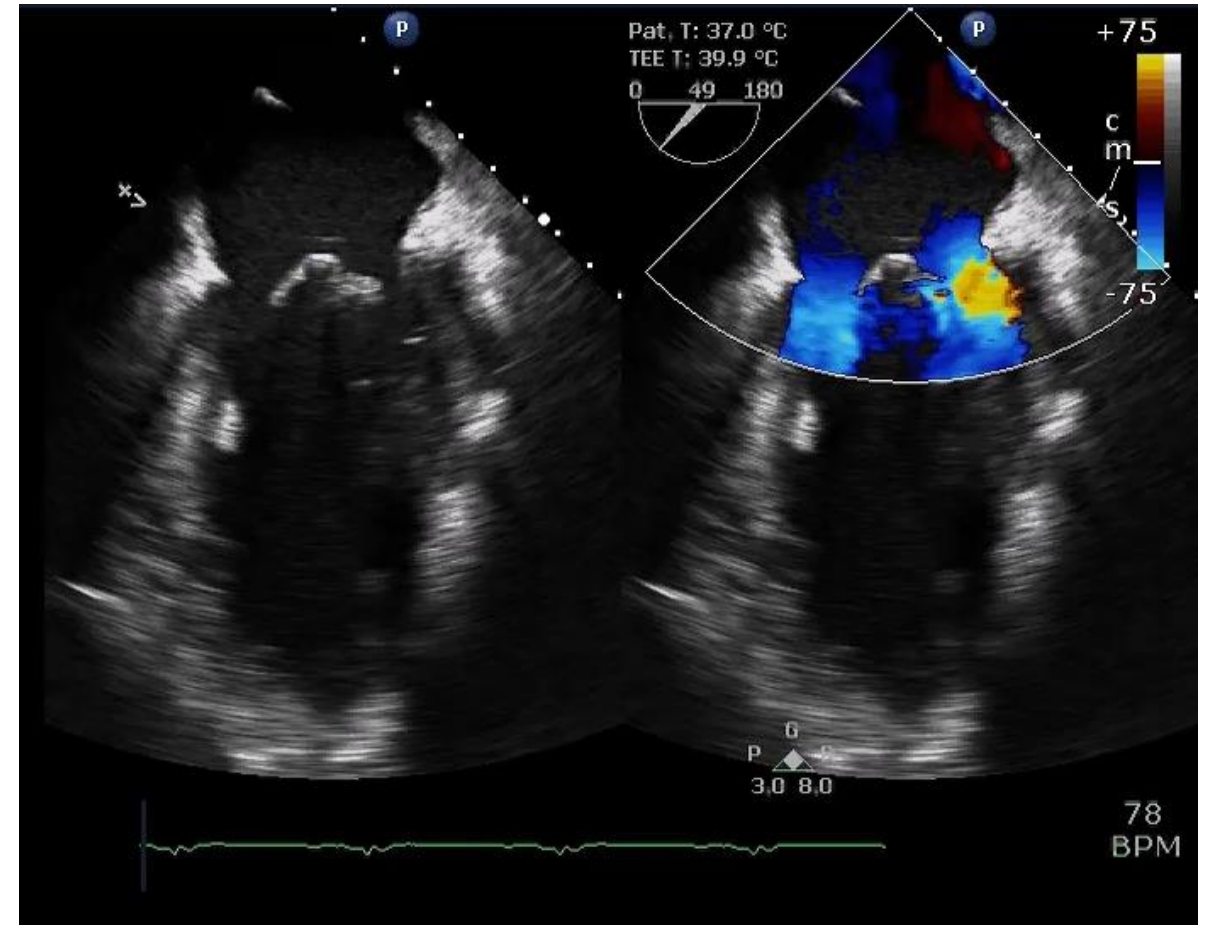
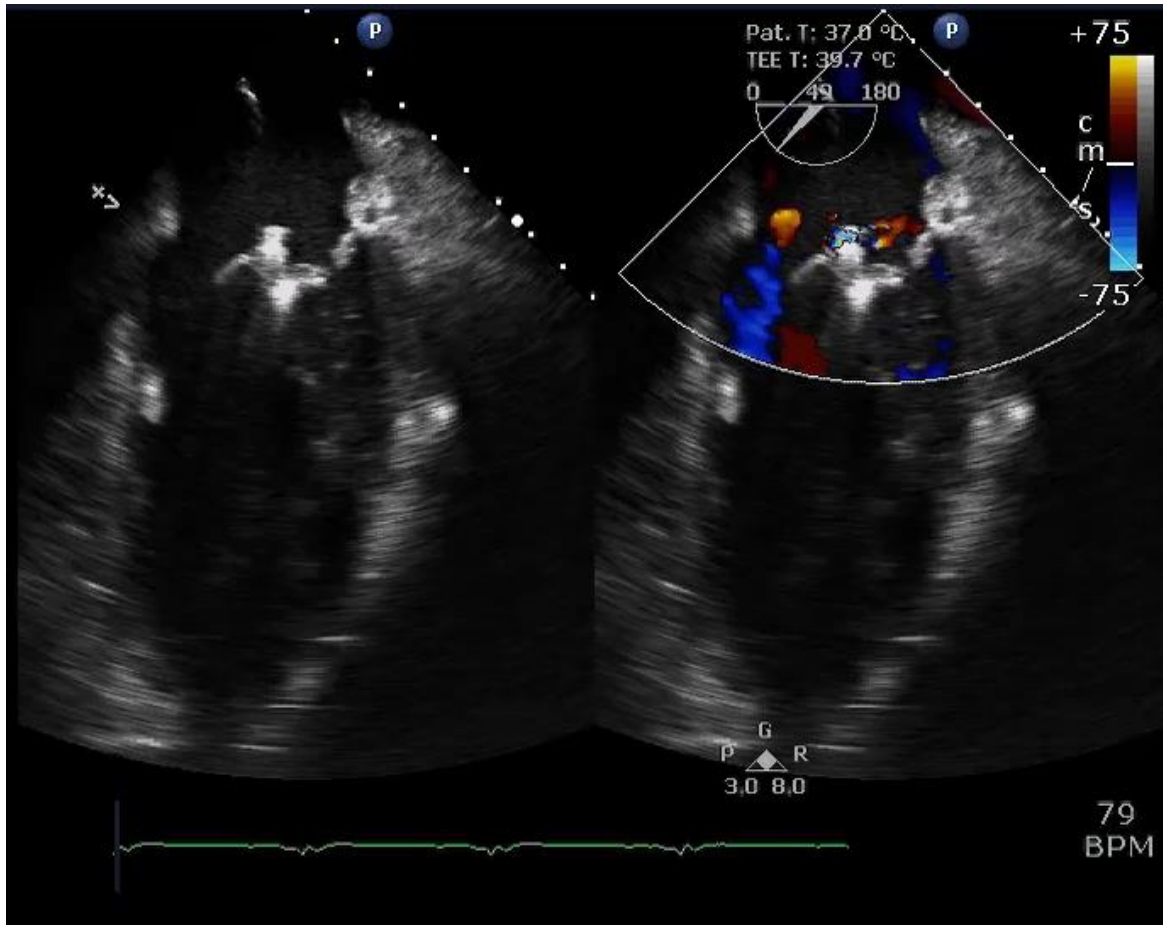
Missed grasp



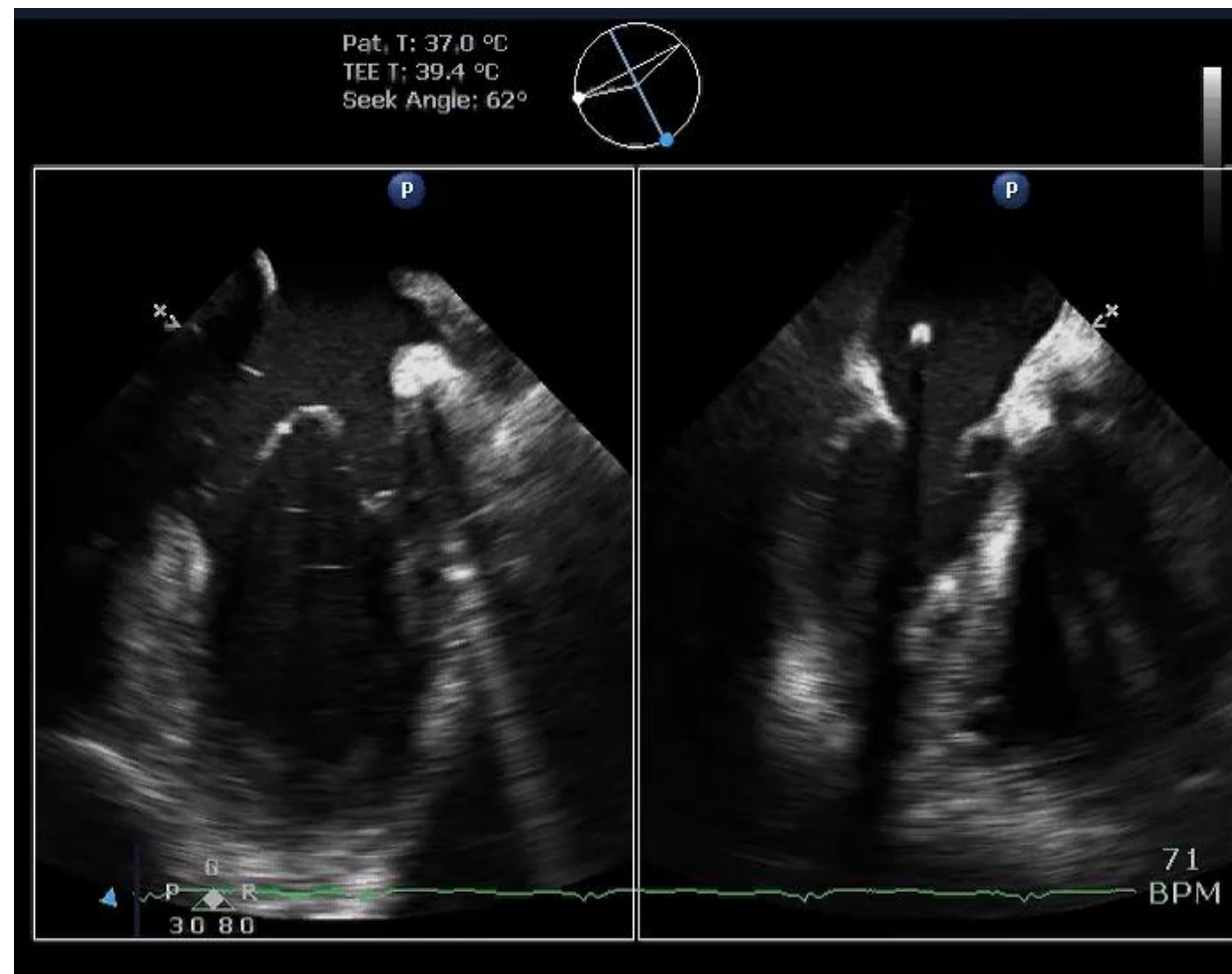
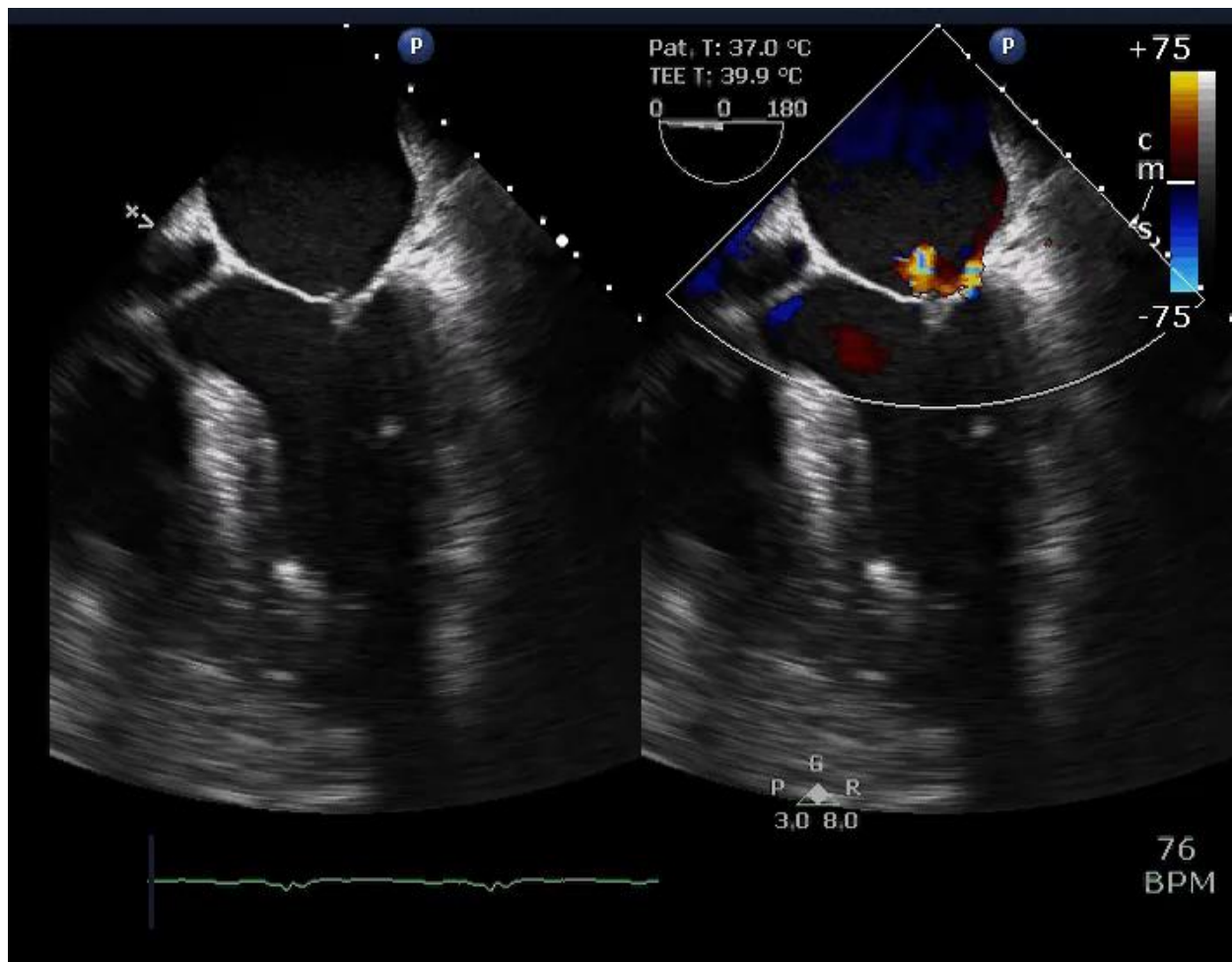
Repeat Attempt

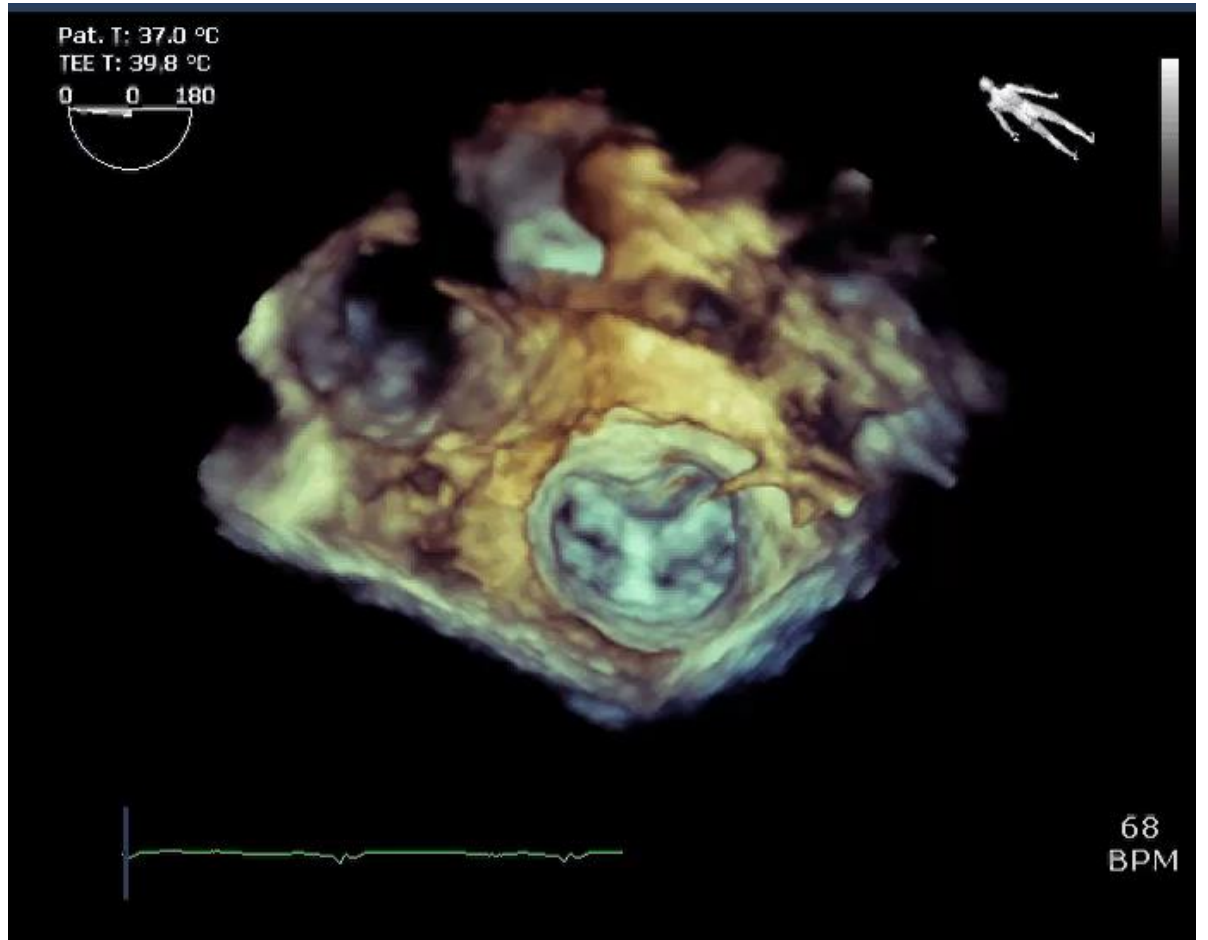
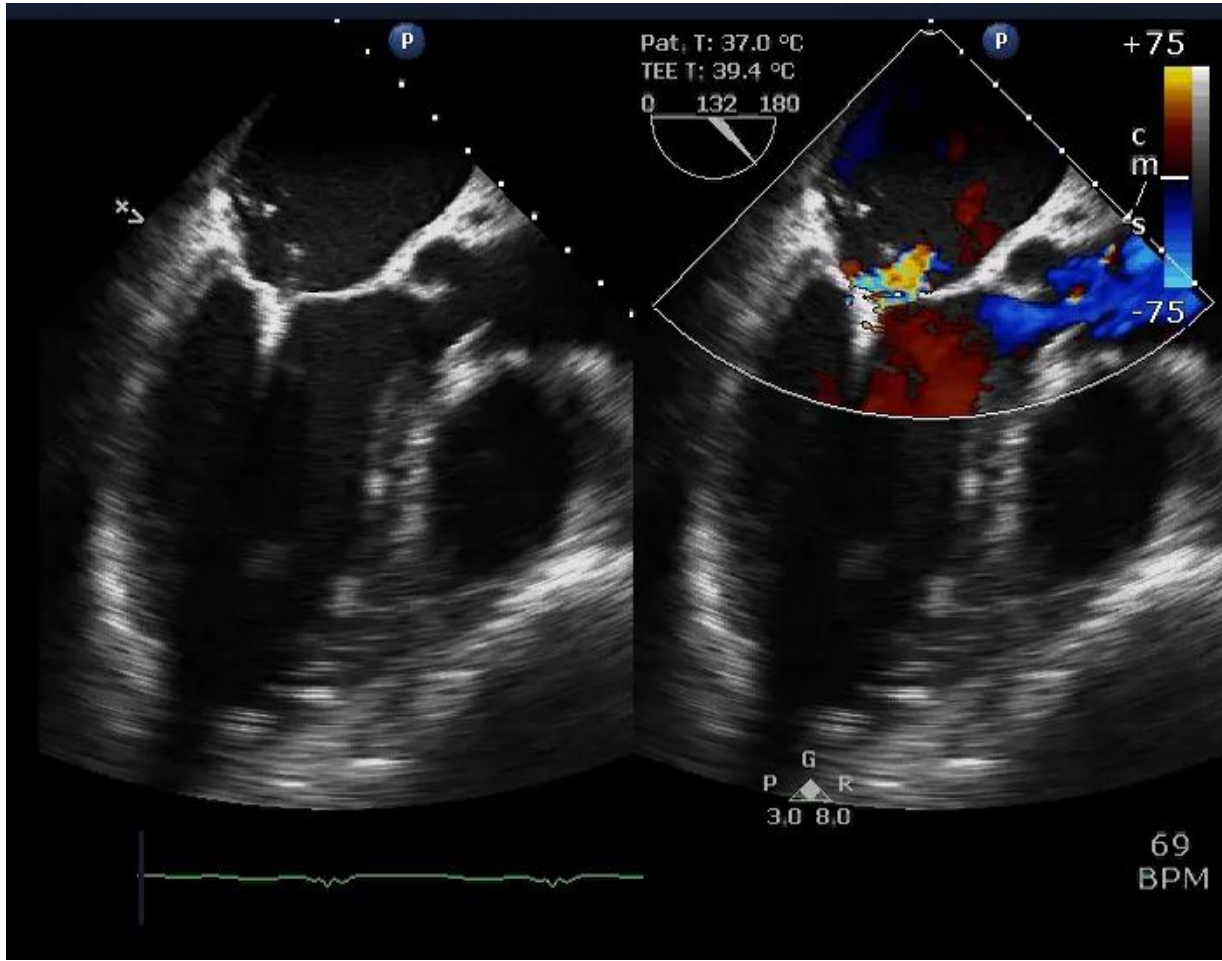


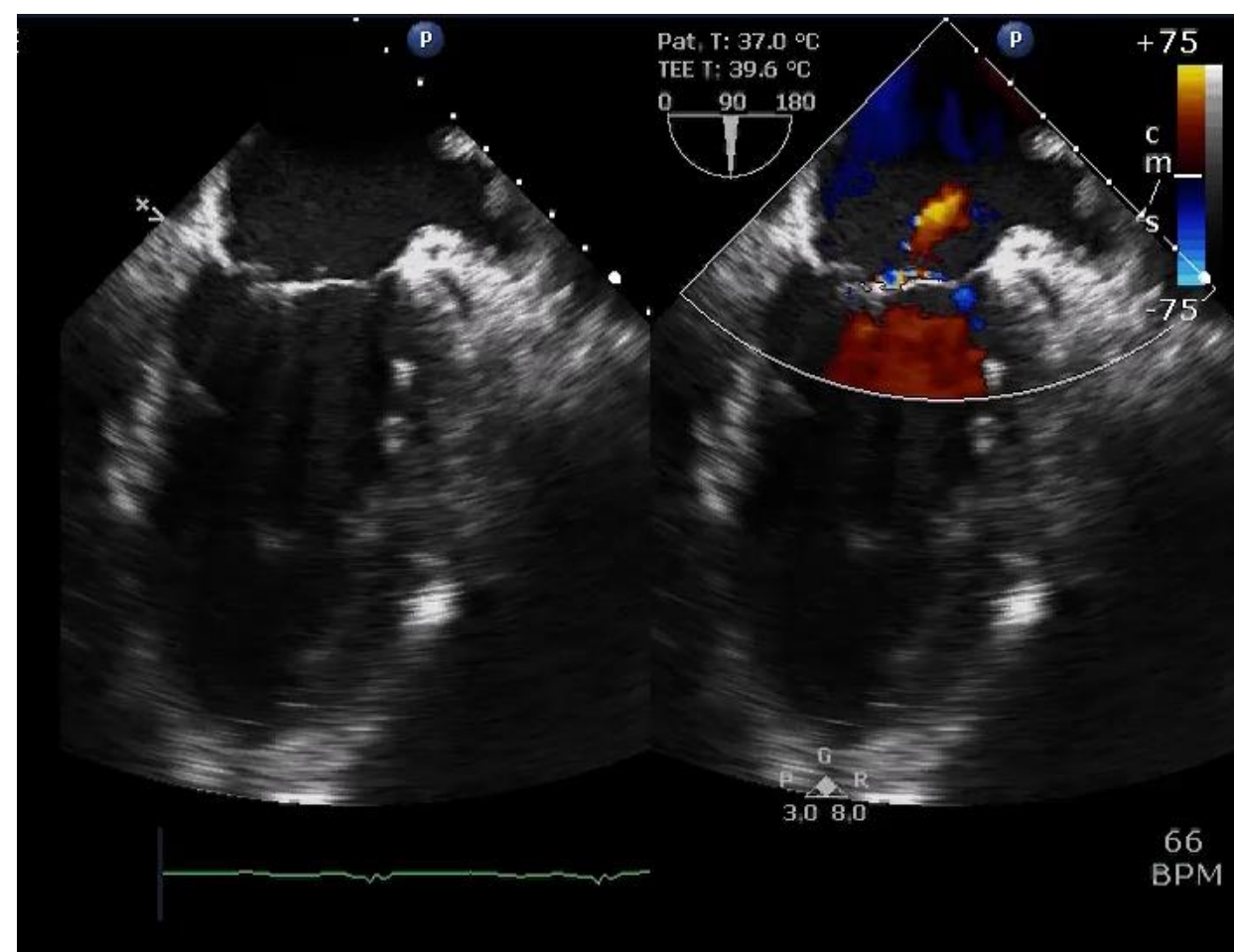
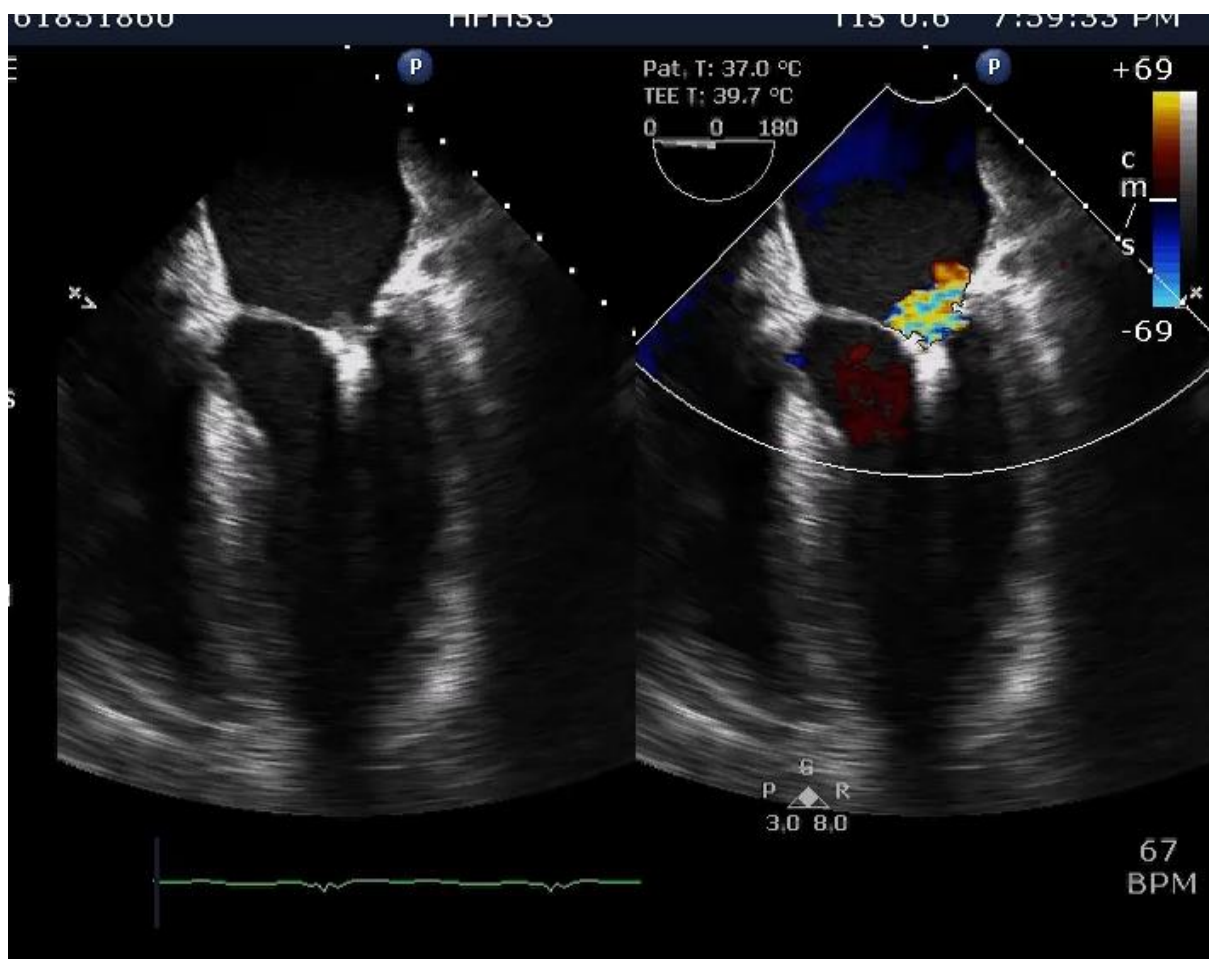
MR improved



Reconfirm Quality of grasp







Patient Extubated in 36 hours

