


Distal radial artery approach

# Hemostasis & Complications

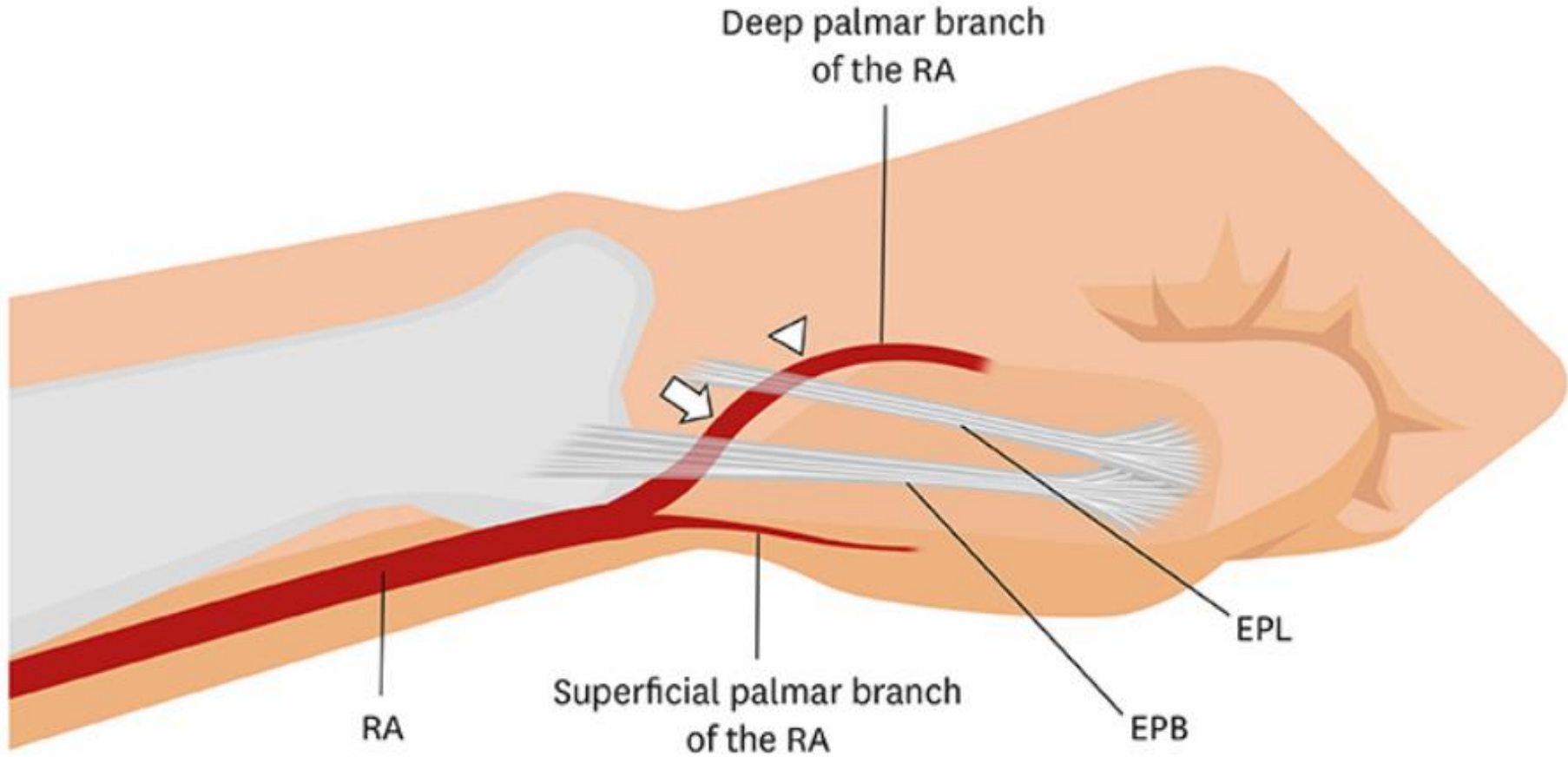


**Jun-Won Lee**

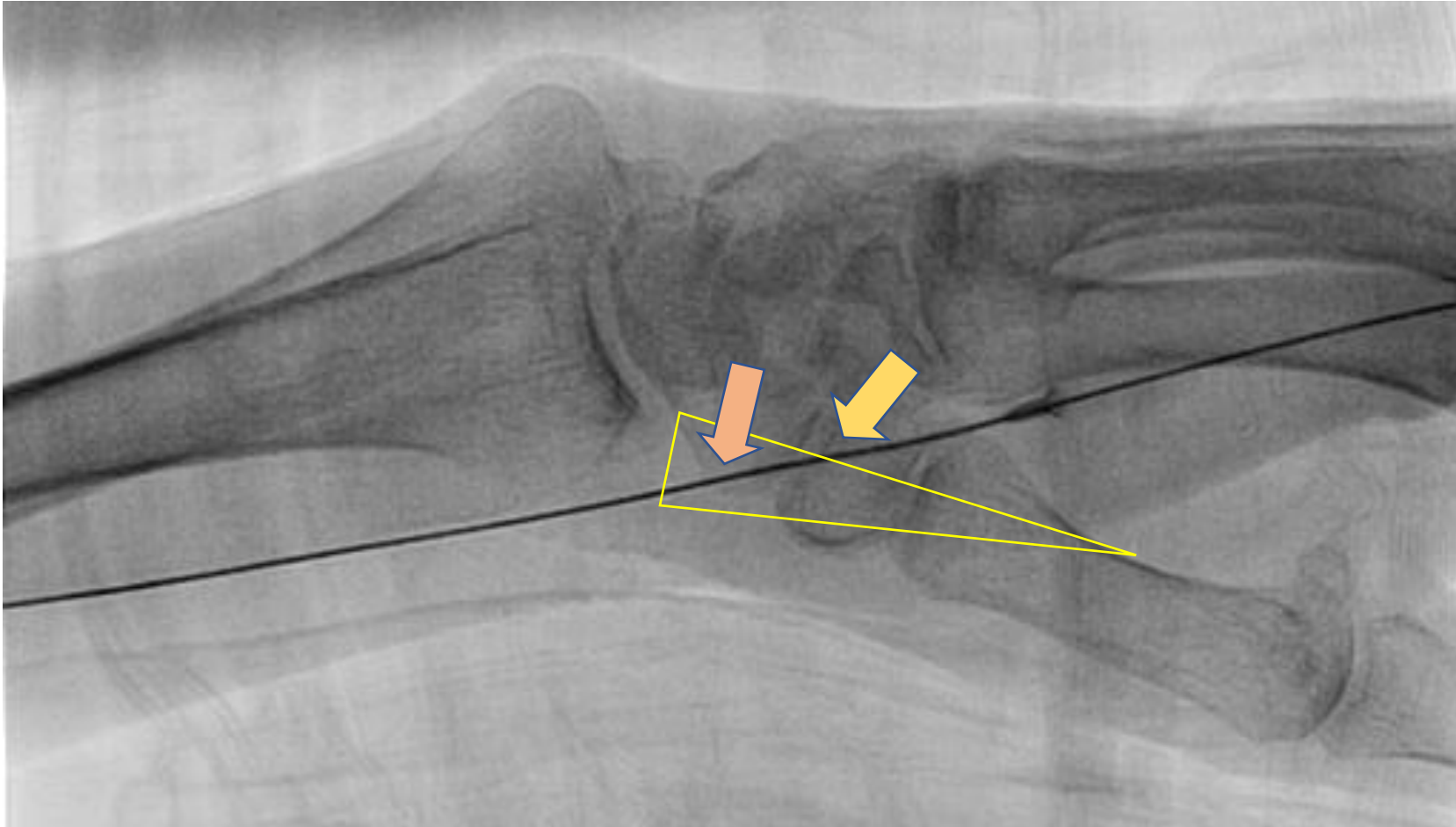
Yonsei University Wonju College of Medicine  
Wonju Severance Christian Hospital, Wonju, Korea

# Hemostasis

# Puncture site



Which point do you prefer?



Where is the landmark?



# Puncture point = related to hemostasis method & complications

	<b>Snuffbox area</b>	<b>Distal over the tendon</b>
Size		
Depth, Angle		
Difficulty to puncture		
Risk for puncture		
Hematoma		
Neuropathy		

# Device compression

## SafeGuard (Merit) / TR band (Terumo)



Kiemeneij. Eurointervention 2017;13:851-857



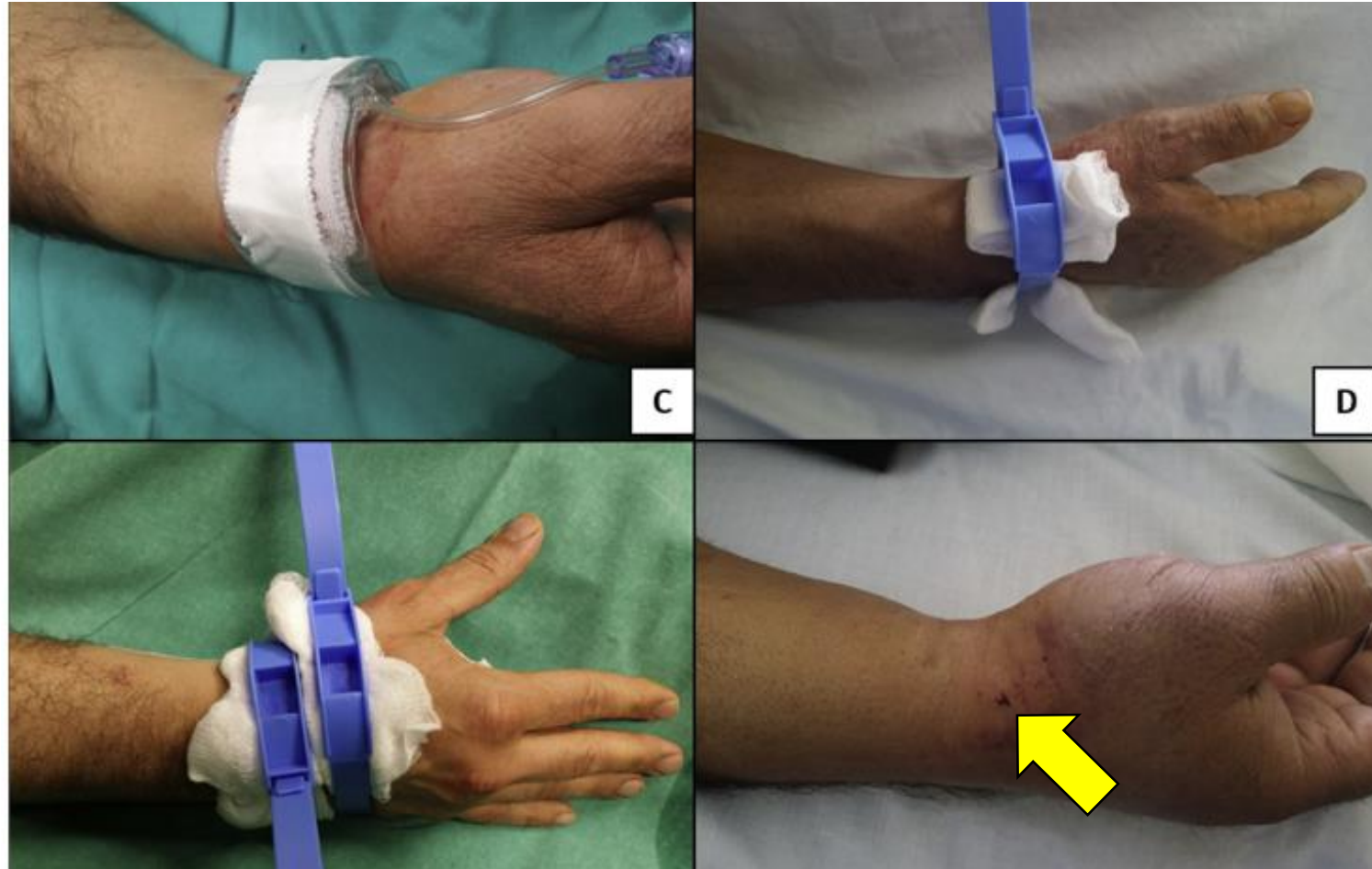
Al-Azizi. Cardiovascular Revascularization Medicine 2018

# Compression bandage

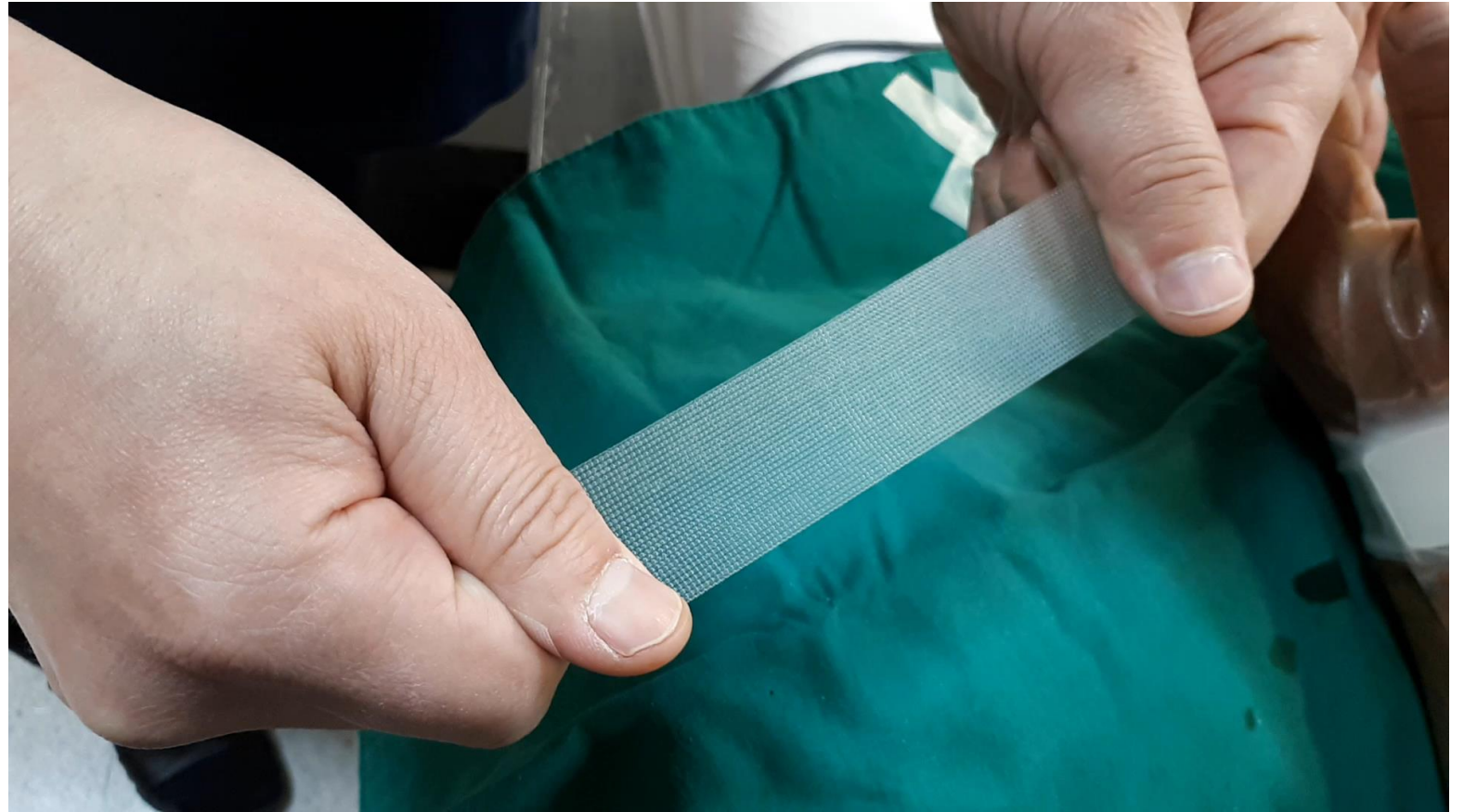




# Air compression, Plastic strip



Easily extensible → Self-release over time



# Our hospital method



# Compression bandage + Fixation plate





# DRA dedicated hemostasis ?

- **Similar** with radial compression
- **Different** among hospitals
- **We need to investigate** suitable compression time & effective compression methods.

# Complications

# Possible complications

<b>Minor hematoma</b>	Puncture-related dissection
<b>Arterial occlusion</b>	Tendon injury
<b>Neuropathy</b>	Major hematoma
	Perforation
	Pseudoaneurysm
	AV fistula
	Compartment syndrome
	Hand ischemia / dysfunction



# Hematoma & Swelling

most of hematoma is not critical, but not happy



# Risk for perforation



# 035 Superflex GW (Terumo)



Check angiography after puncture



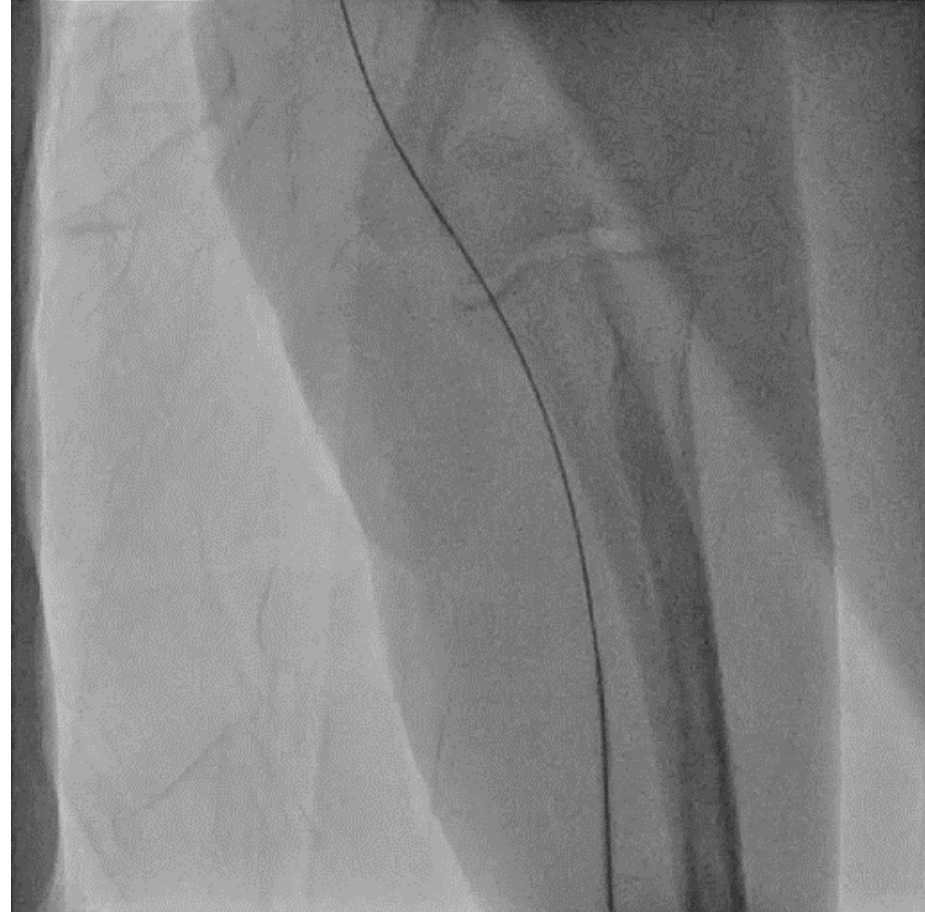
# Arterial dissection



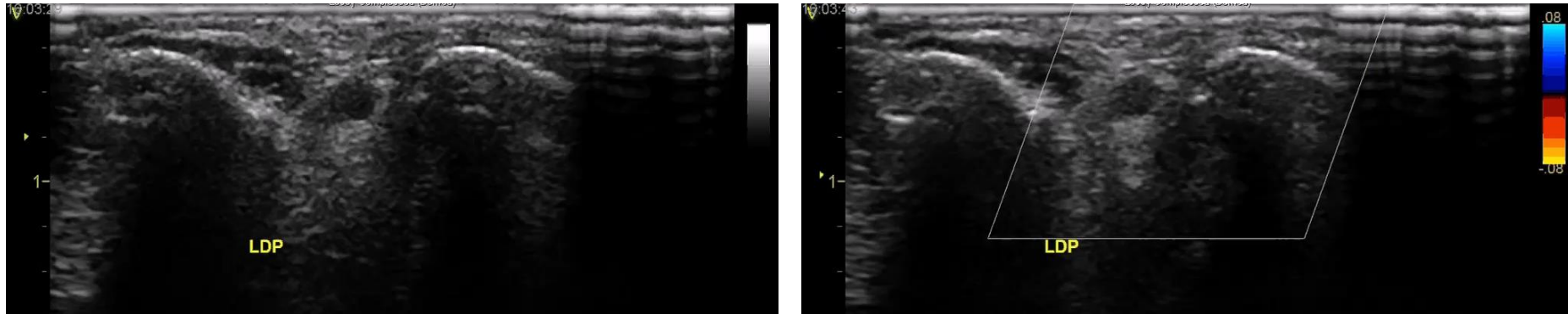
# Long radial artery dissection



# Coverage with Long sheath

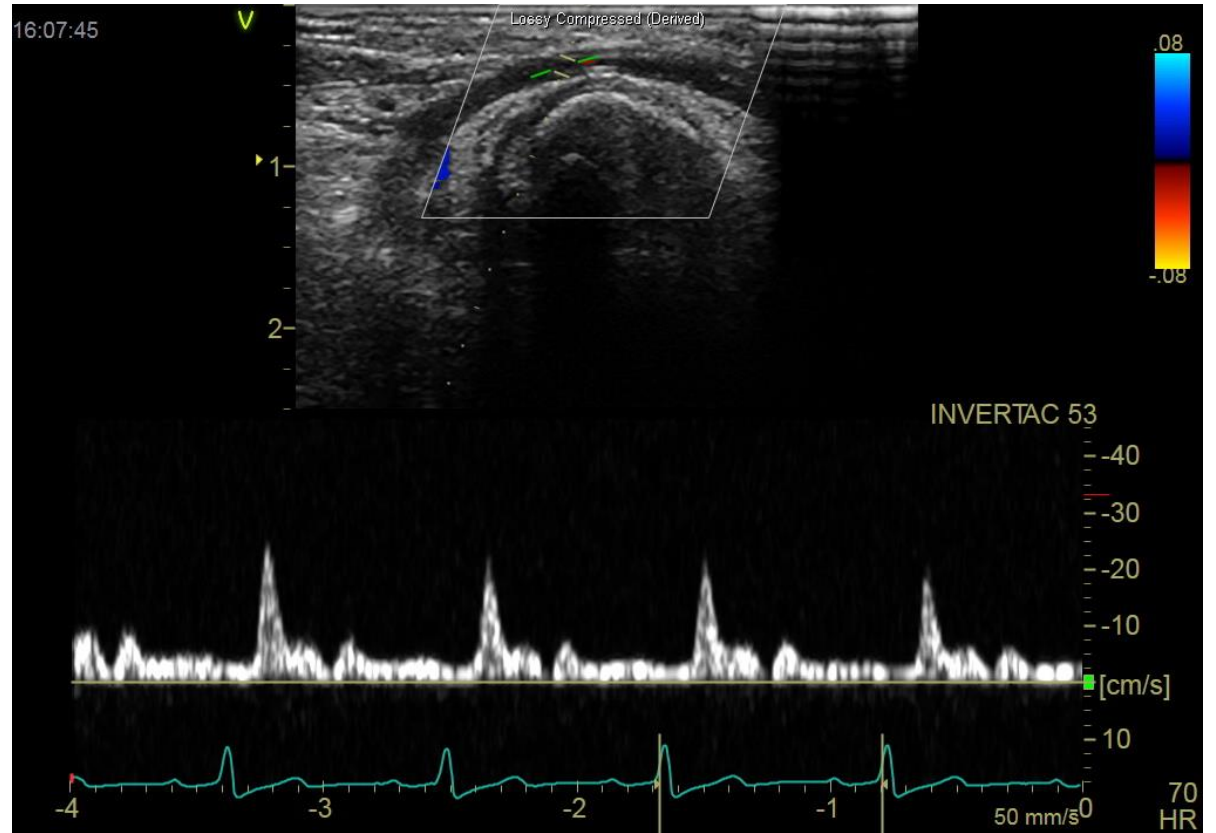
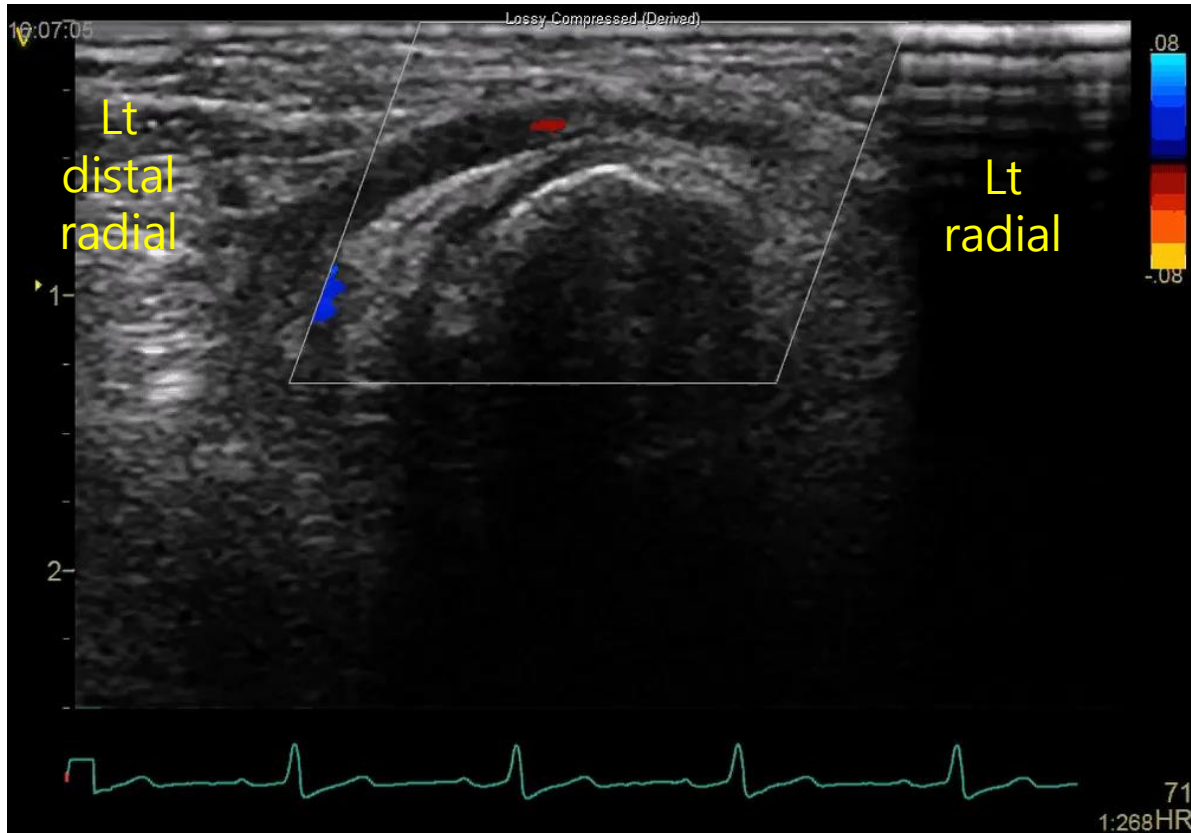


# F/U Ultrasonography (short axis view)





# F/U Ultrasonography (longitudinal view)





# Summary

1. Distal radial artery is relatively easy to compress.
2. But, different styles of hemostasis in every hospital.
3. Study for compression method and time is needed.
4. Possible complications for distal radial approach should be investigated with a careful attention.