

Case-Based Debate for Vulnerable Plaque to Vulnerable Patient, Detection and Treatment -Case presentation-

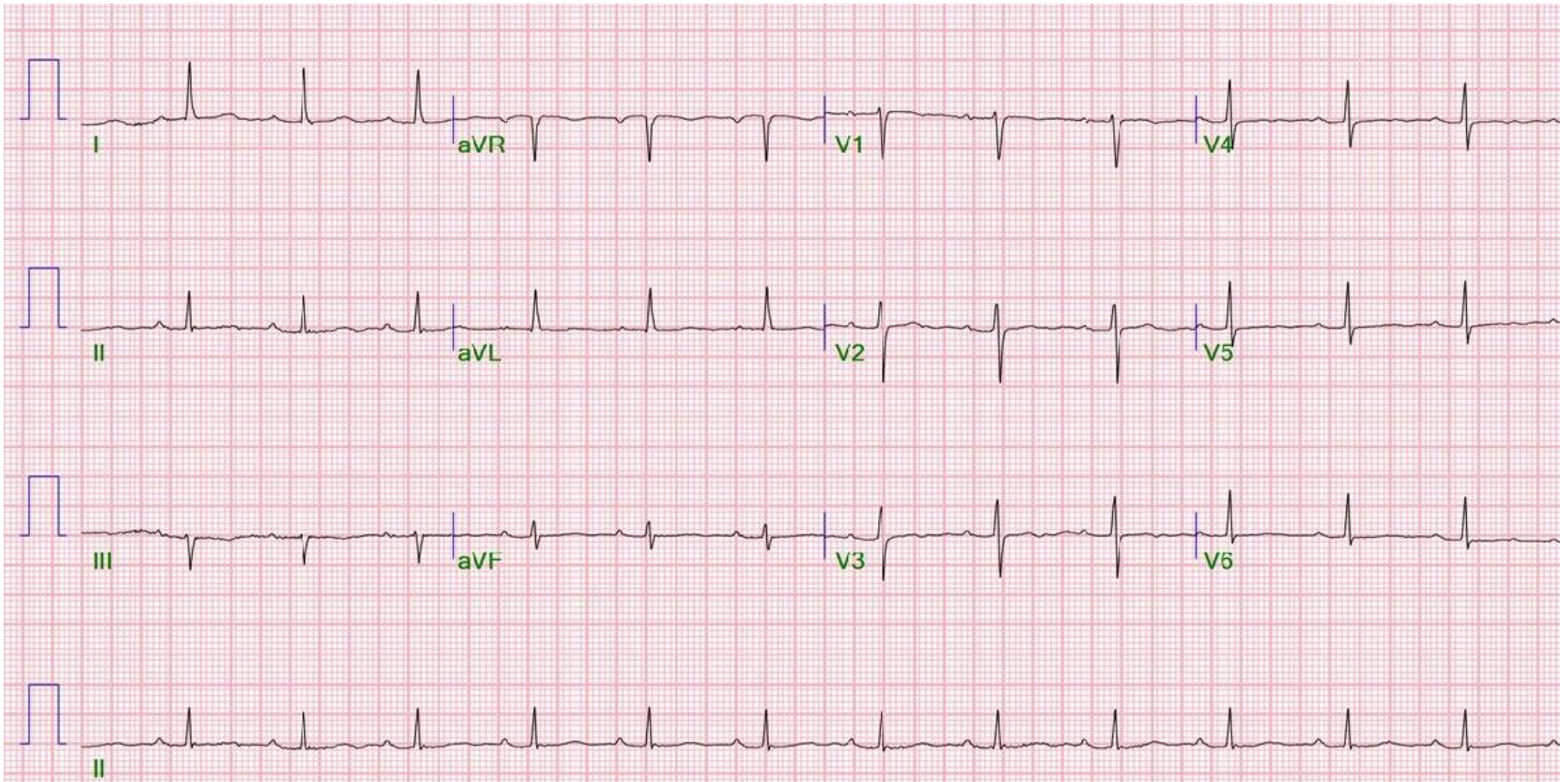
Hae Won Jung, MD

Cardiology, Daegu Catholic University Medical Center, Daegu

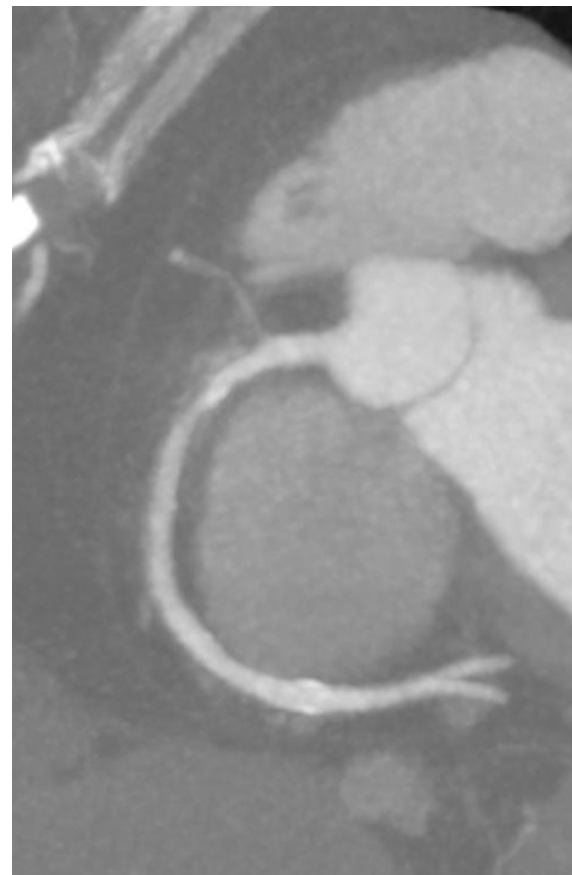
Case F/75

- CCS III for 1 month
- PMHx
 - Hypertension (+) Dyslipidemia(+)
- Rx
 - Simvastatin/Ezetimibe 10/10mg, Amlodipine 5mg
- Lab
 - Total cholesterol/HDLc/TG/LDLc (mg/dL) 133/58/103/69
 - HbA1c (%) 6.2
 - Exercise stress ECG: stop on stage I due to leg pain

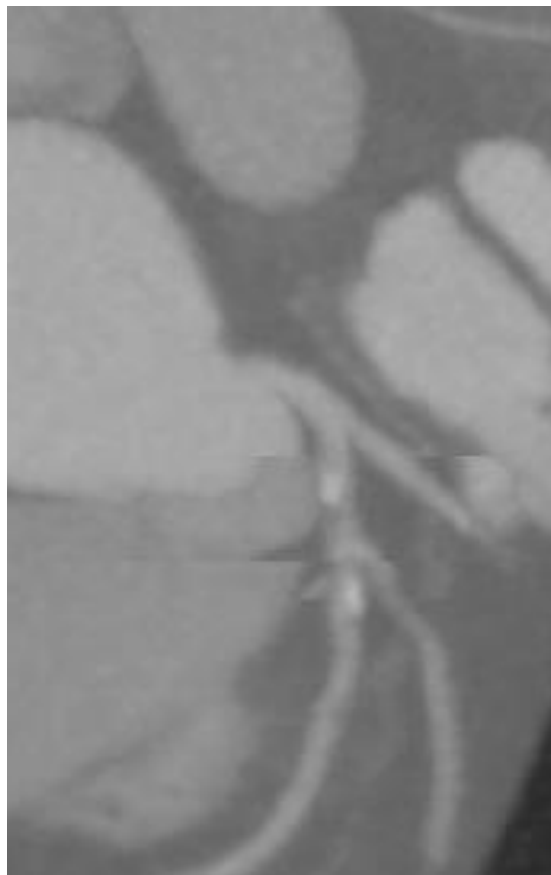
ECG



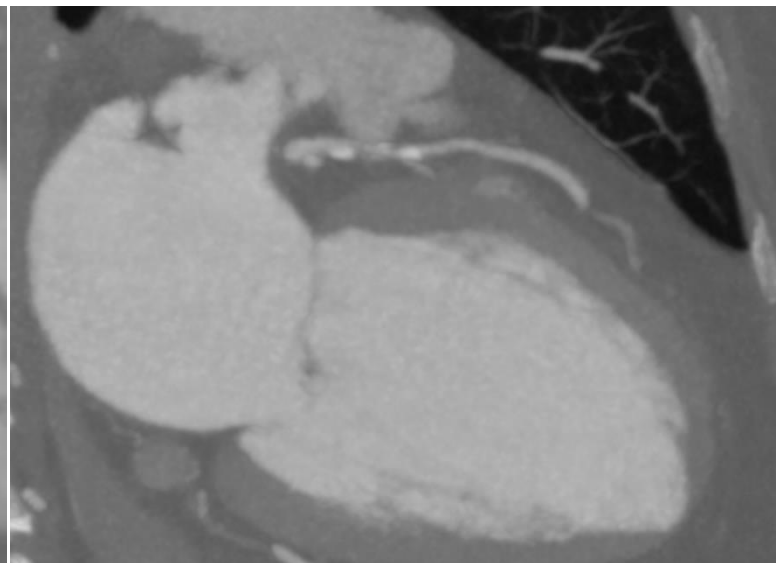
CCTA



RCA

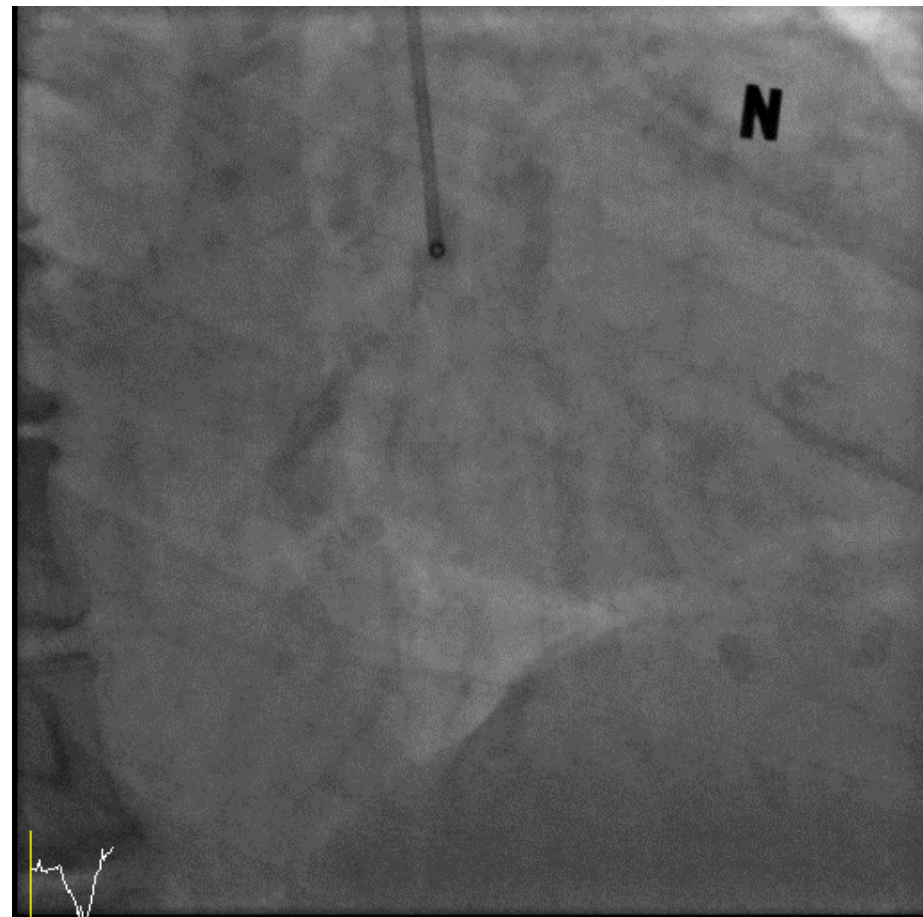
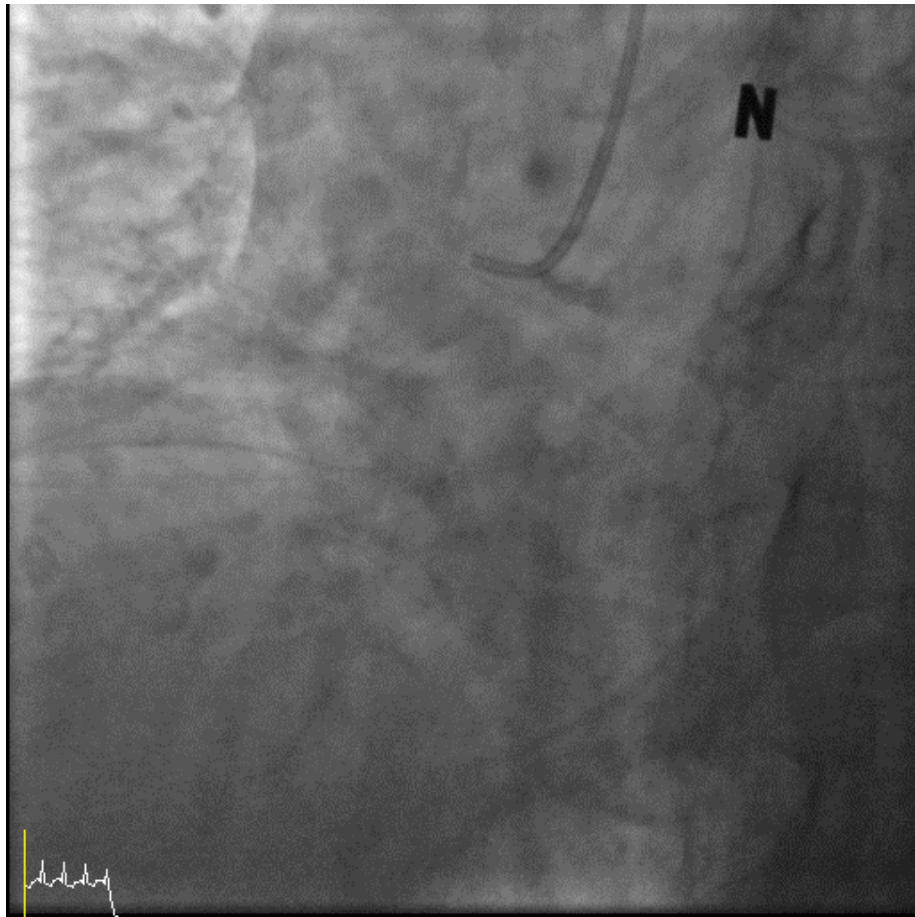


LAD

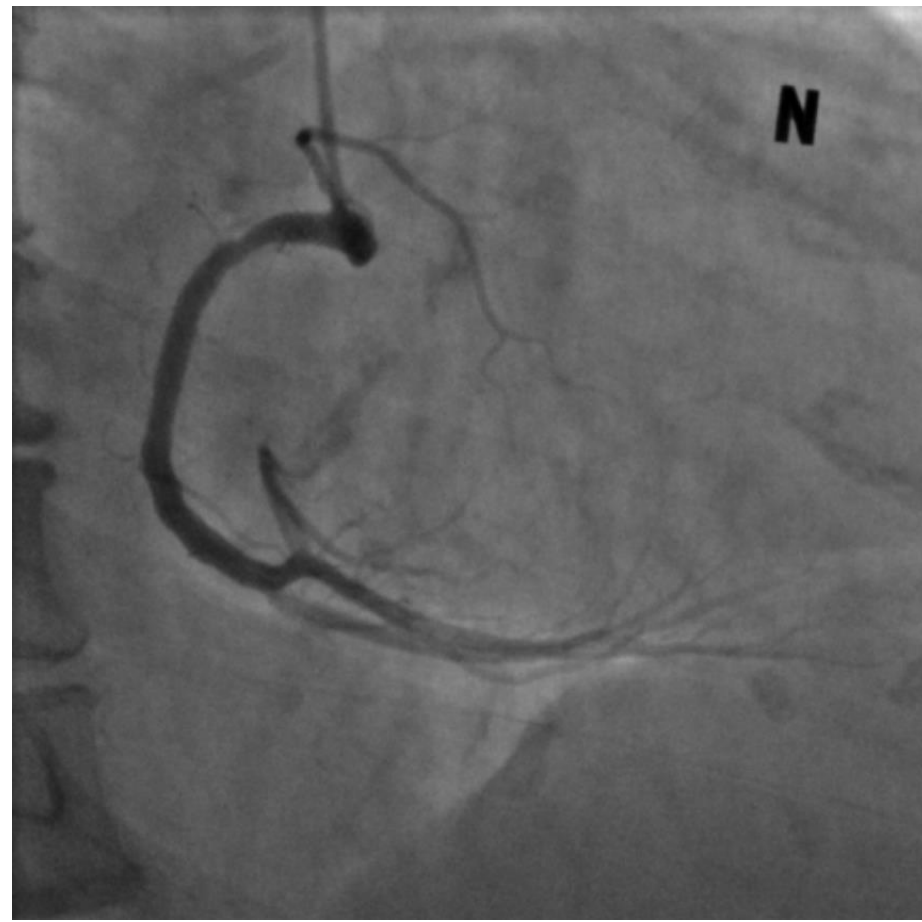
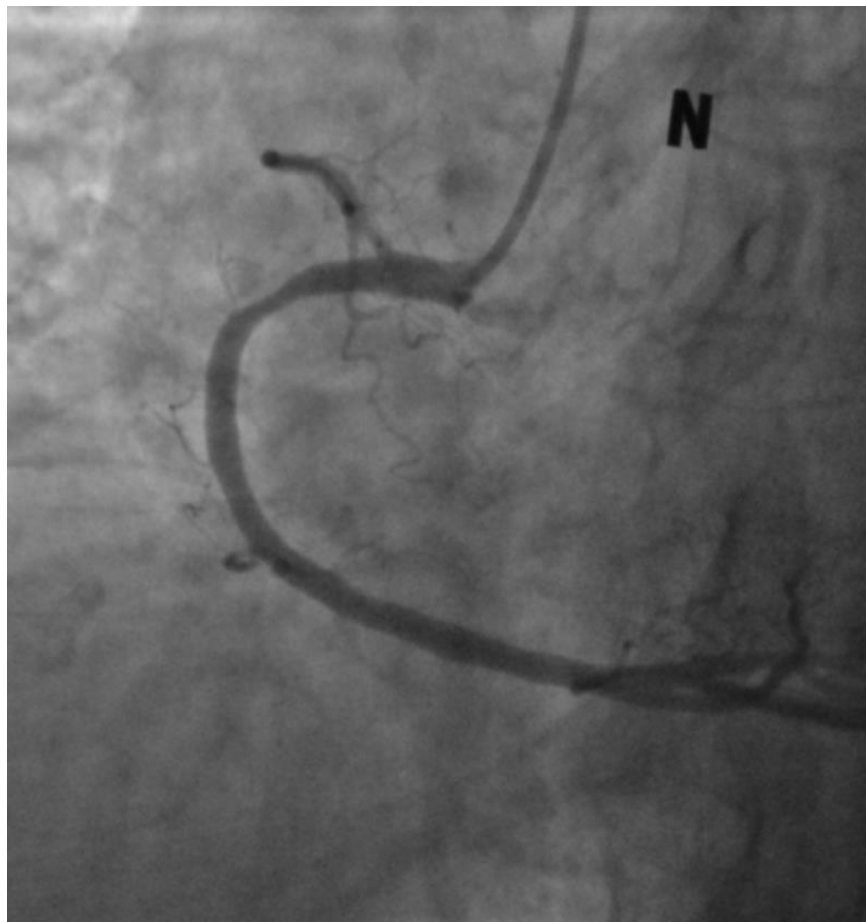


LAD

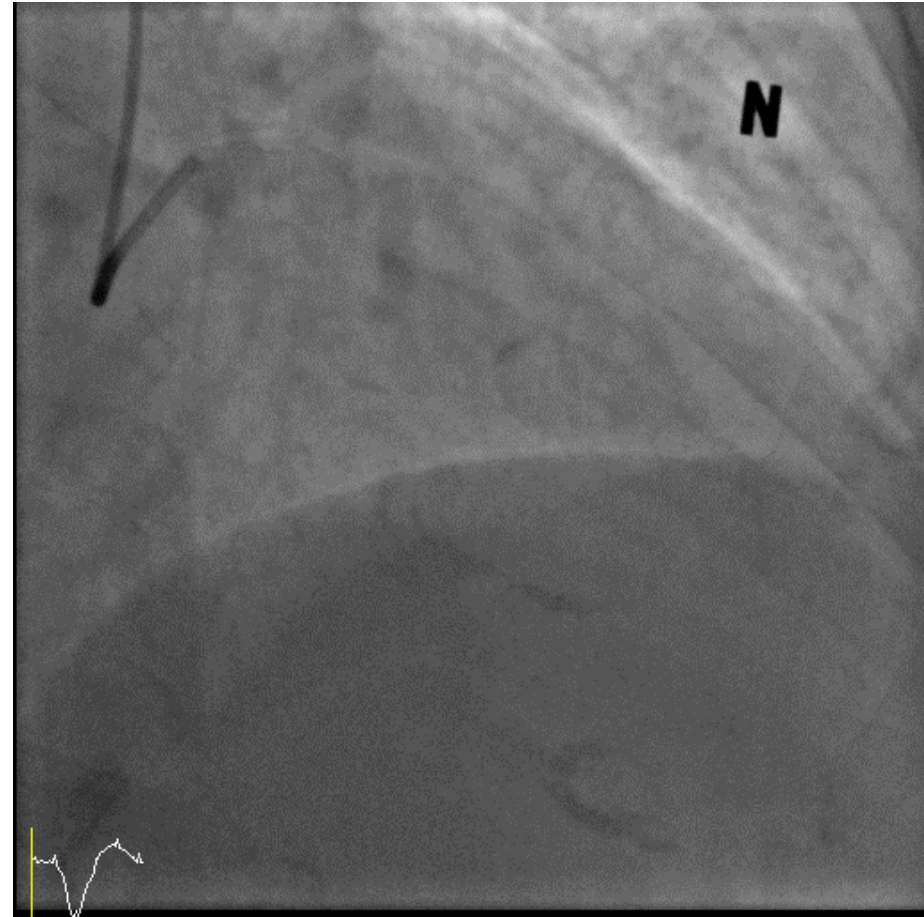
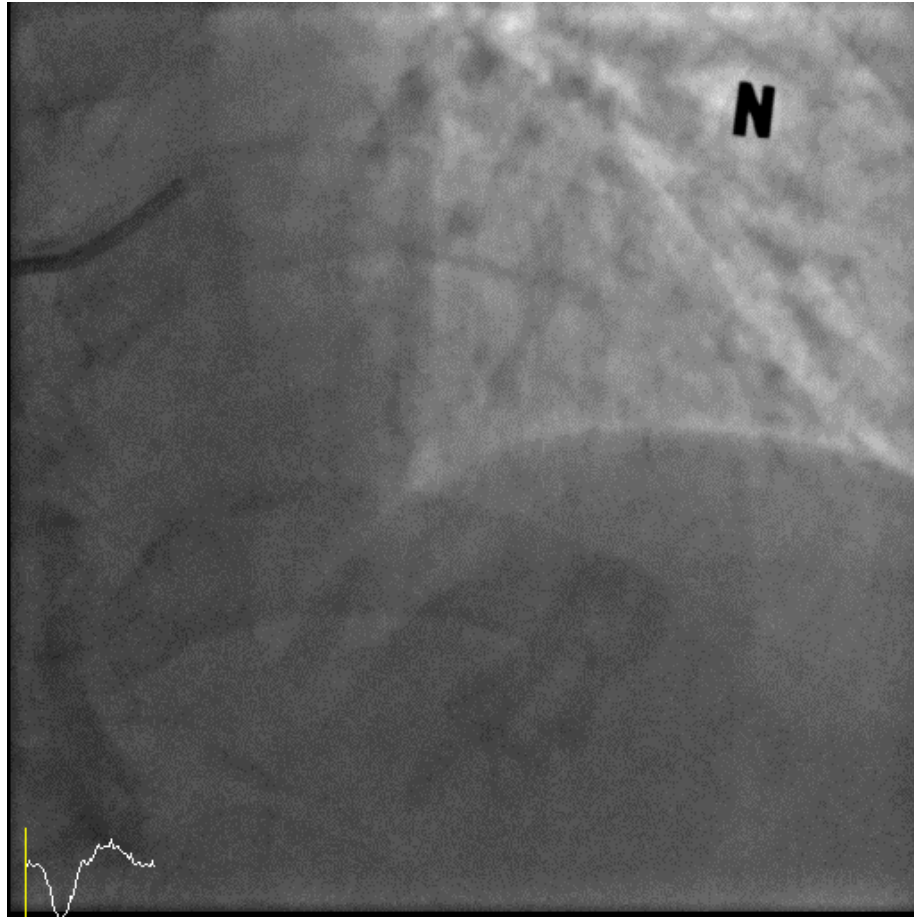
CAG



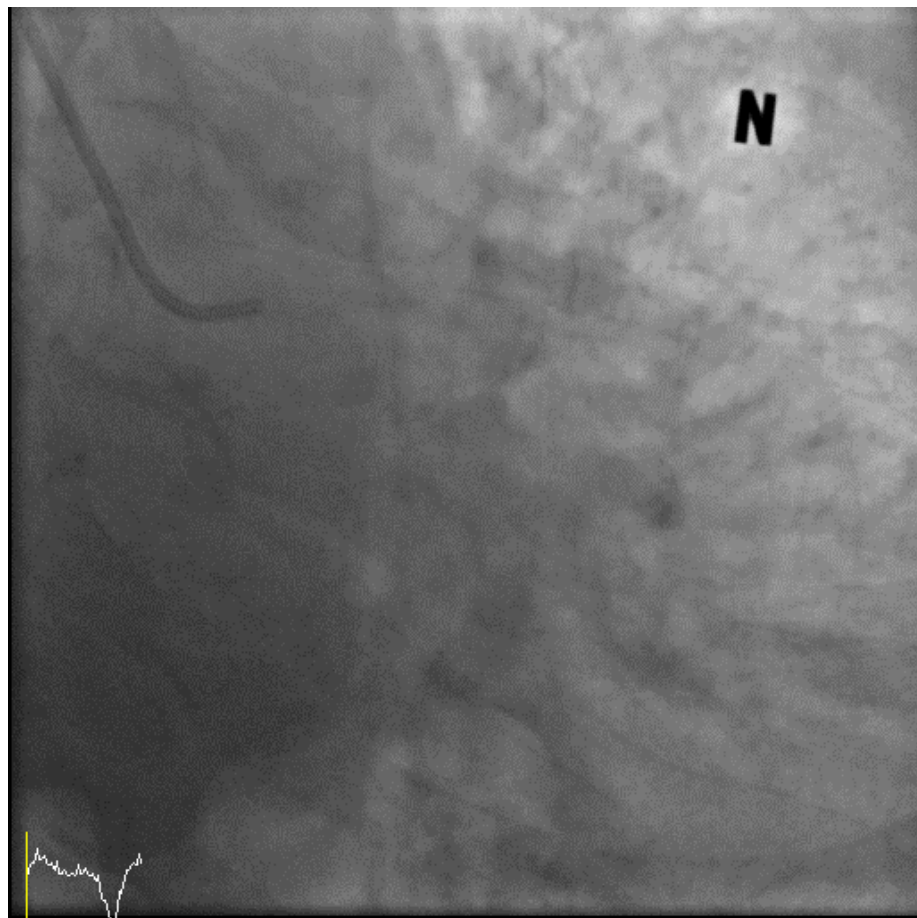
CAG



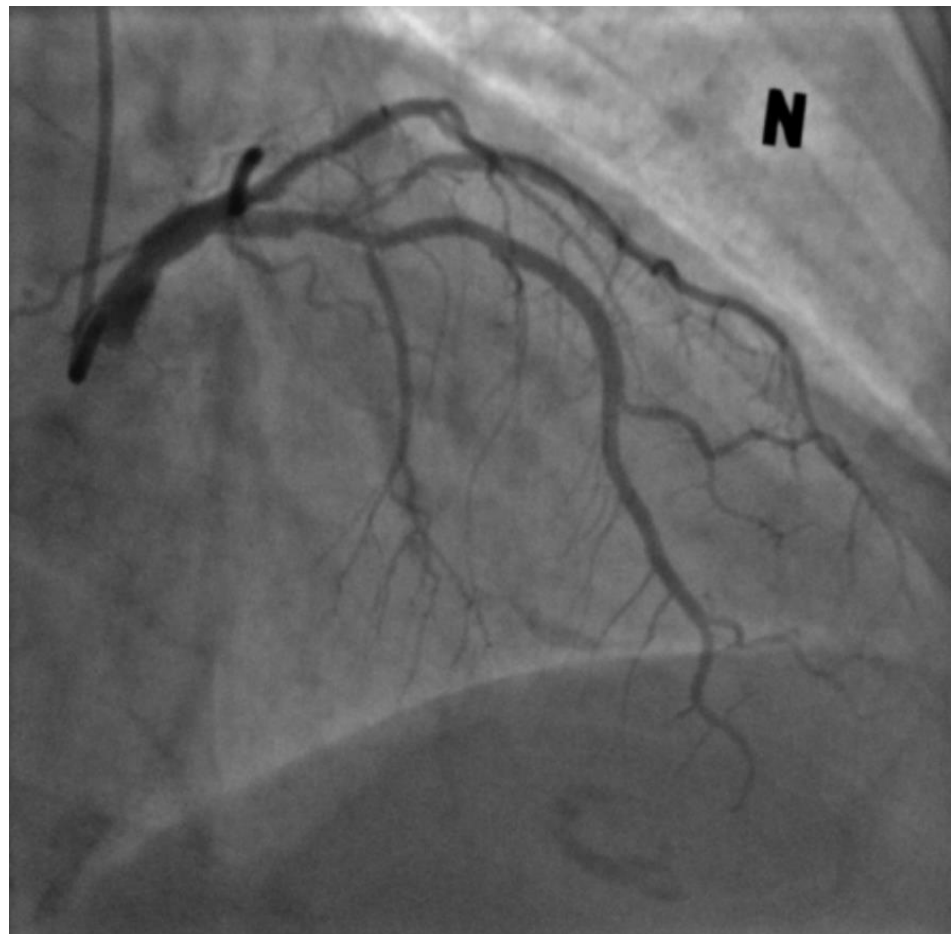
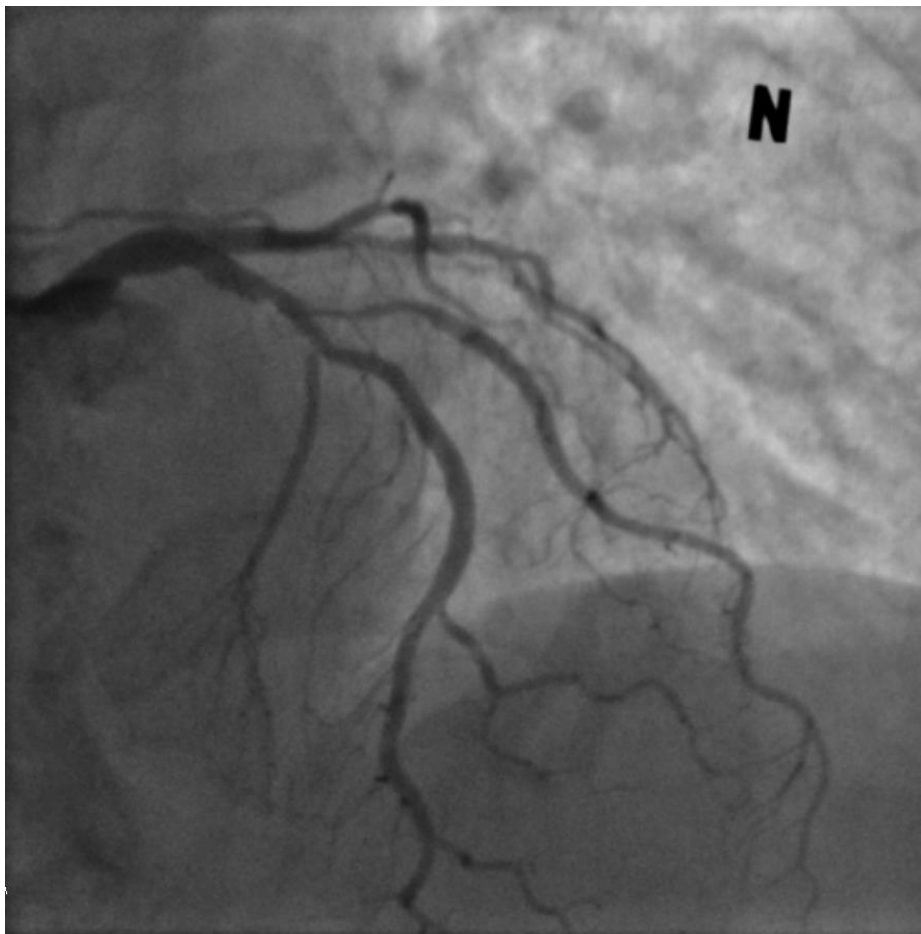
CAG



CAG



CAG



CAG

