

# **Femoropopliteal stent fracture with recurrent in-stent occlusion and pseudoaneurysm**

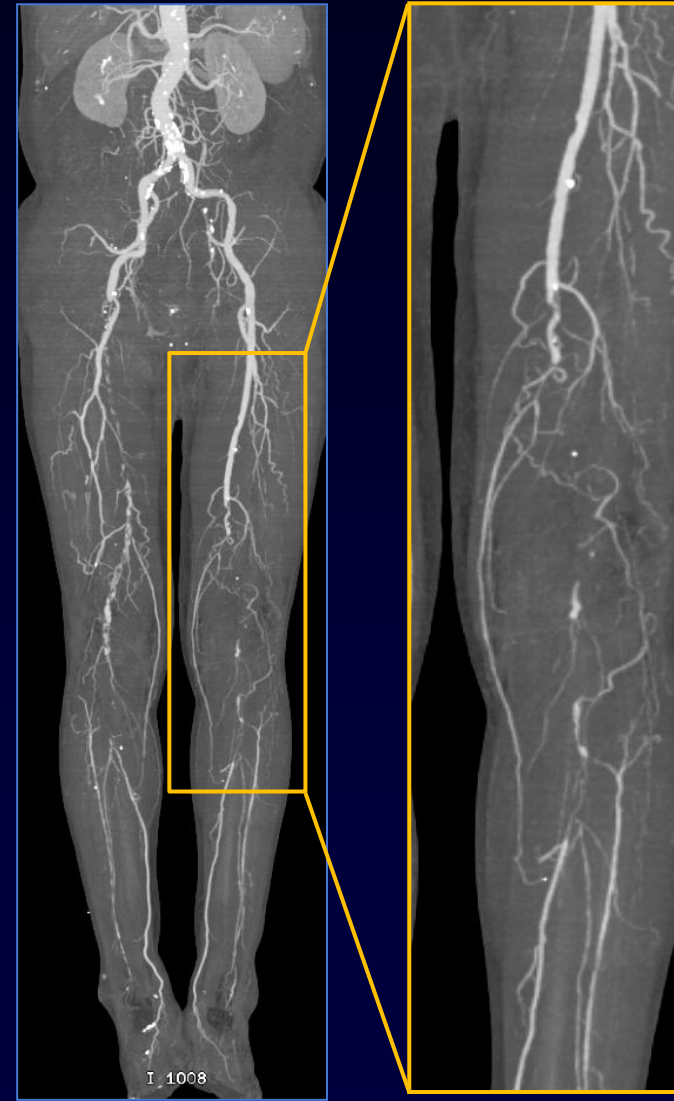
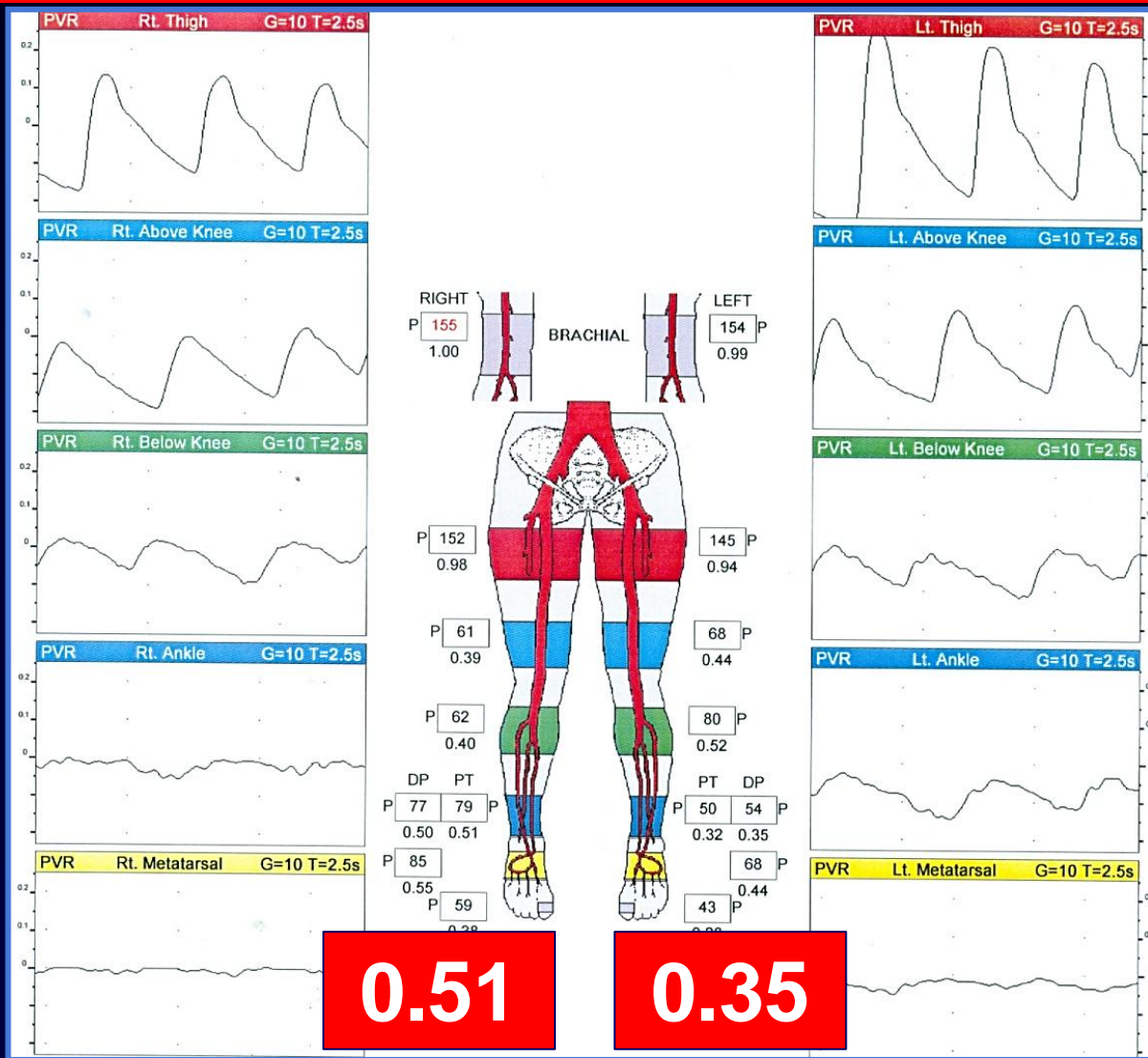
**Donghoon Choi, MD, PhD**

**Severance Cardiovascular Center,  
Yonsei University College of Medicine**

# Case

- **71 / M**
- **Chief complaint:**  
**Claudication, both (Rutherford 3)**
- **Comorbidities:**
  - **Coronary artery disease**
  - **Diabetes mellitus**
  - **Hypertension**
  - **Dyslipidemia**

# CT and ABI



# PTA

## Initial angiography



- Antegrade approach
- 035 hydrophilic Terumo wire
- Savvy long 3 x 150mm PTA balloon

# PTA



**Ater balloon**



**Absolute pro 6 x 100mm**

# 3 month Follow-up CT



**Previous stent maintained patency without aneurysmal changes**

# 7 month FU angiography

Follow up examination of left femoral stent was performed during percutaneous coronary intervention. Patient was asymptomatic.



Multiple type II fracture



In-stent restenosis

Pseudoaneurysm

# 13 month FU angiography

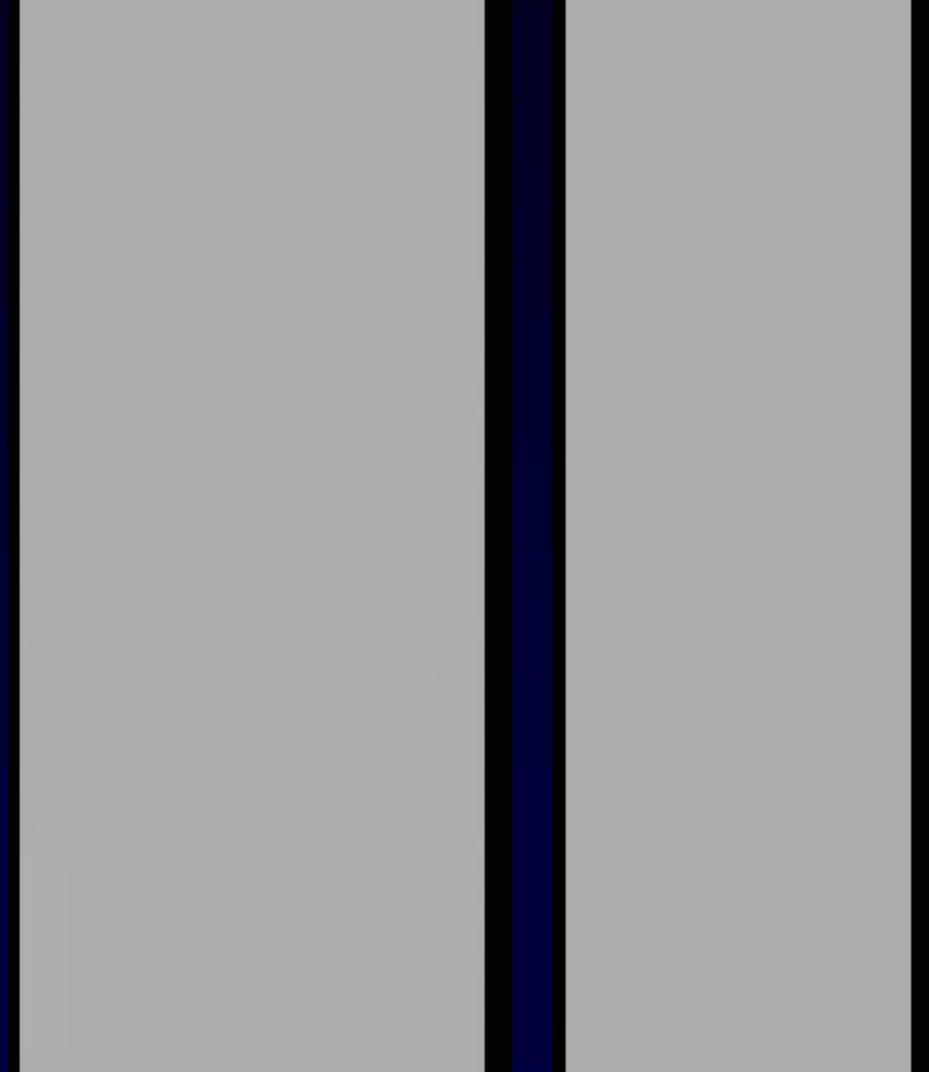
The patient complained severe claudication (Rutherford 3).





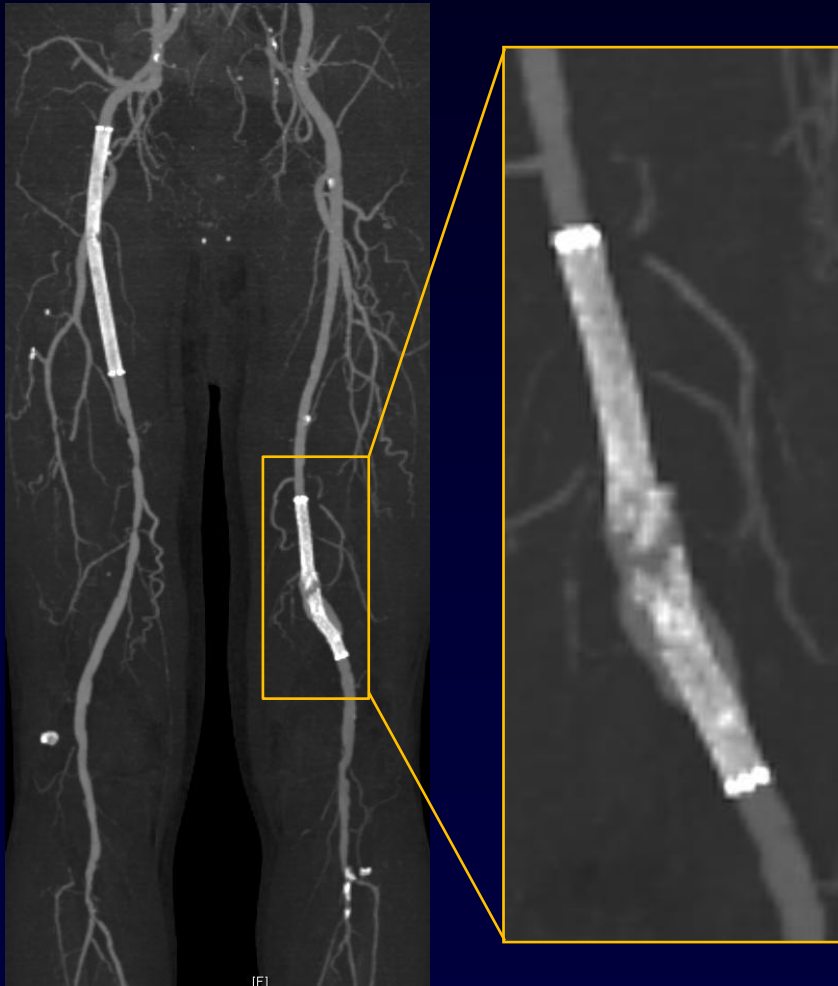
# 13 month FU angiography

After balloon angioplasty  
Final angiography



# 2 yr FU angiography

The patient re-complained severe claudication (Rutherford 3).

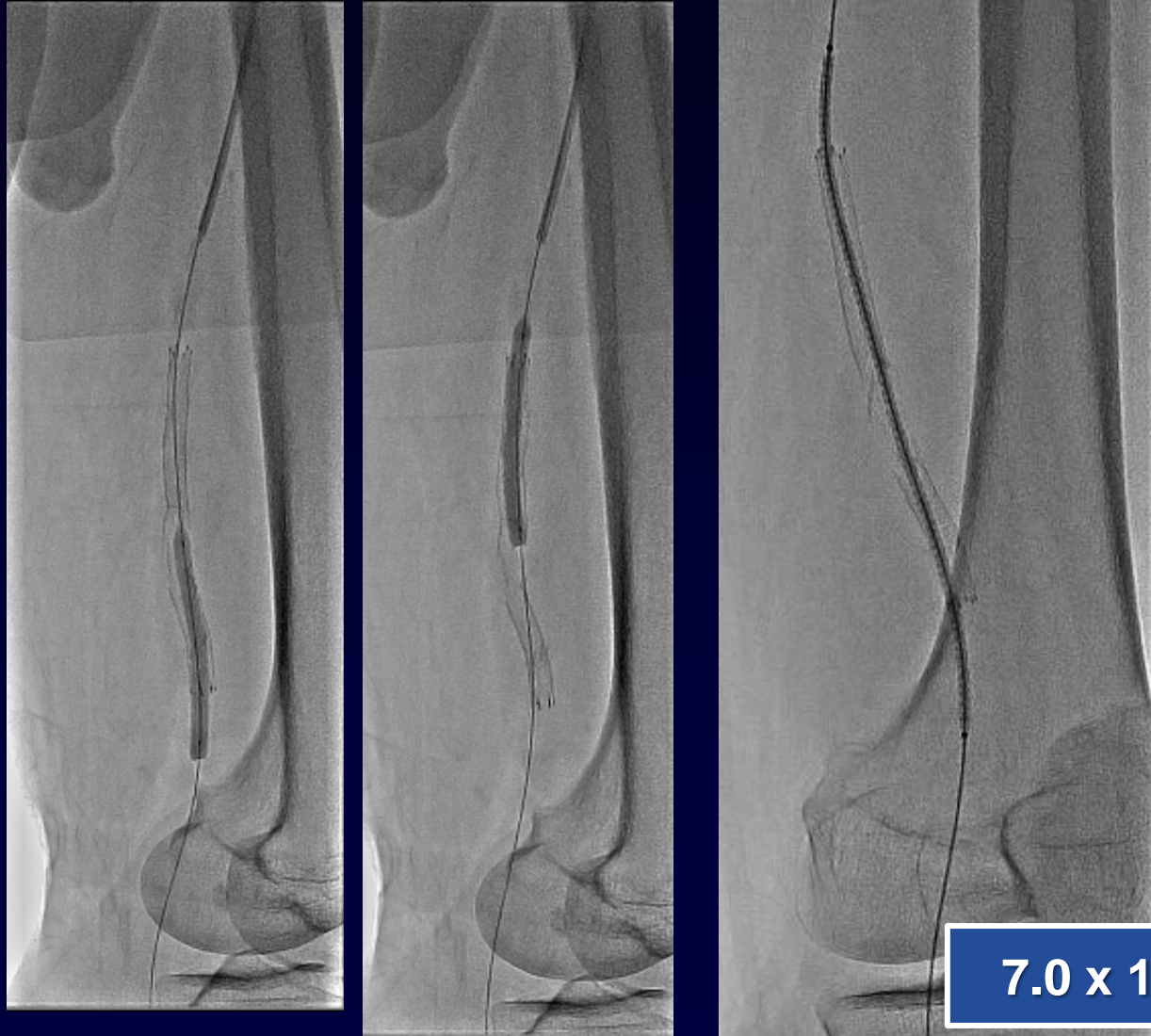


**Stent fracture (type V) with complete dislocation and pseudoaneurysm**

# 2 year Follow-up



# 2 year Follow-up



7.0 x 150 mm Viabahn stent

# Final angiography



# 2 m FU CT after Viabahn stent



# Summary

- **Stent fractures may potentially lead to various serious complications.**
- **In the present case, stent fracture with recurrent in-stent occlusion and pseudoaneurysm was successfully treated with self-expandable endovascular stent graft.**

# Crushed stent with acute occlusion in superficial femoral artery after enhanced external counter pulsation

최동훈  
연세의대



# 60/F

5721705 SGN

C.C: Left leg resting pain with claudication

Duration: 2 weeks

## Past history

- 2009. 11. Left claudication – Op for herniated lumbar disk
- 2010. 2. 9 – Lt. SFA total occlusion, balloon angioplasty
- 2010. 10. 11 – Lt. SFA restenosis, stent insertion
- Hypertension essential
- Dyslipidemia
- Old pulmonary Tbc

# First balloon angioplasty (10.2.9)

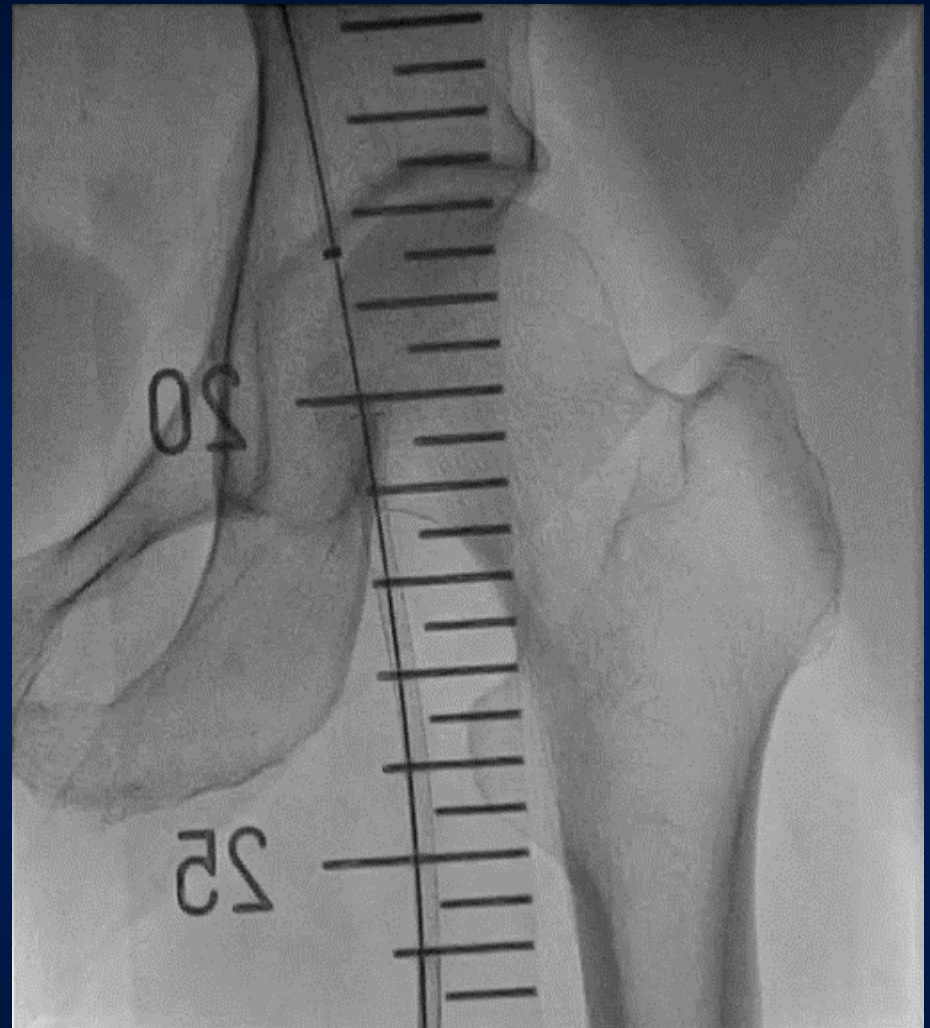
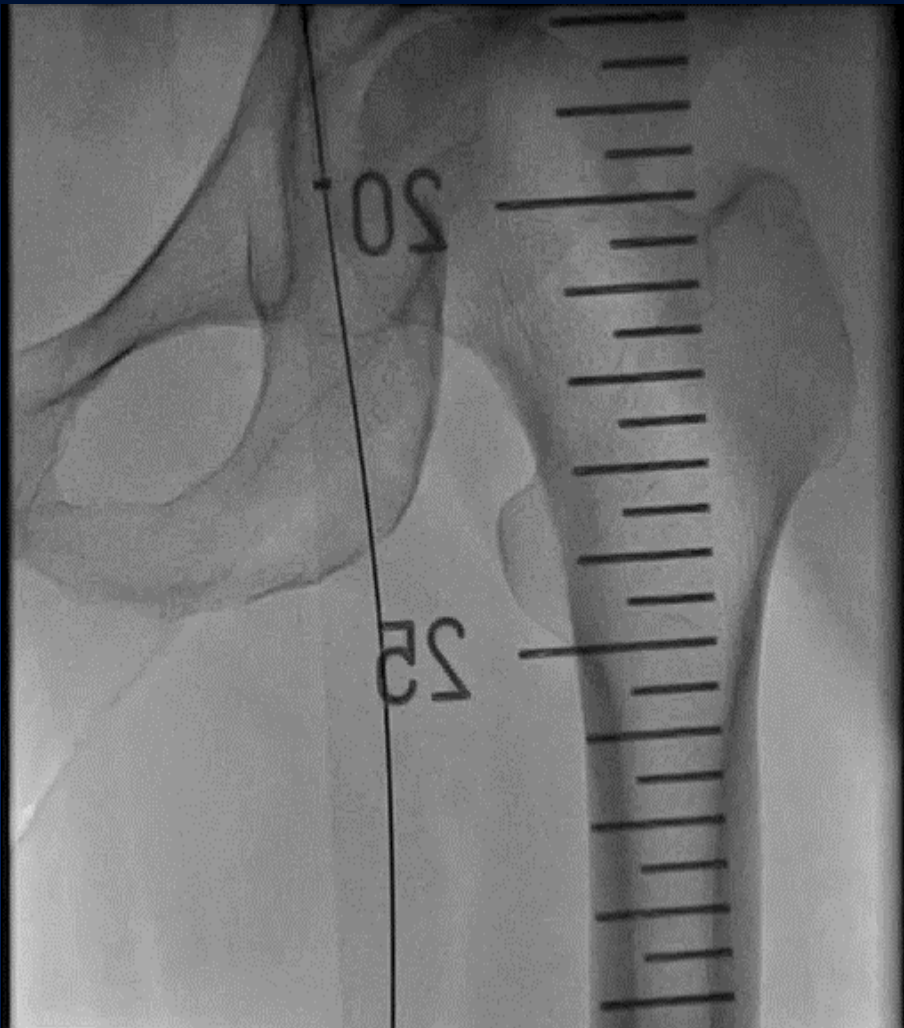


Total occlusion of left SFA



After balloon angioplasty

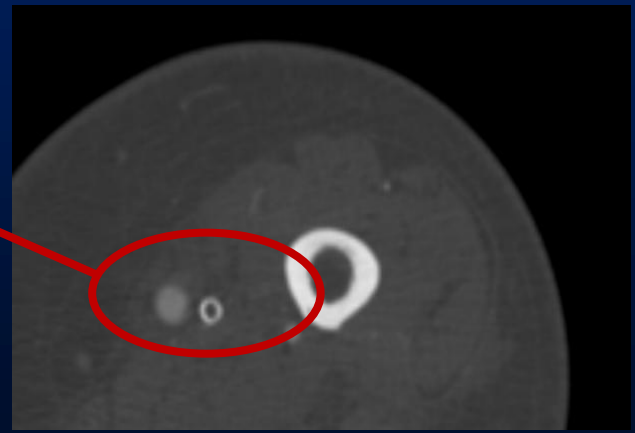
# Restenosis (2010. 10. 11)



Total occlusion of left SFA previously treated by angioplasty →  
Overlapping proximal 6x80mm and distal 6x150mm SMART<sup>®</sup>

# CT angiography (6 months later)

## Spinal cord aneurysm



# Peripheral Angiography



Crushed stent with total occlusion in left SFA

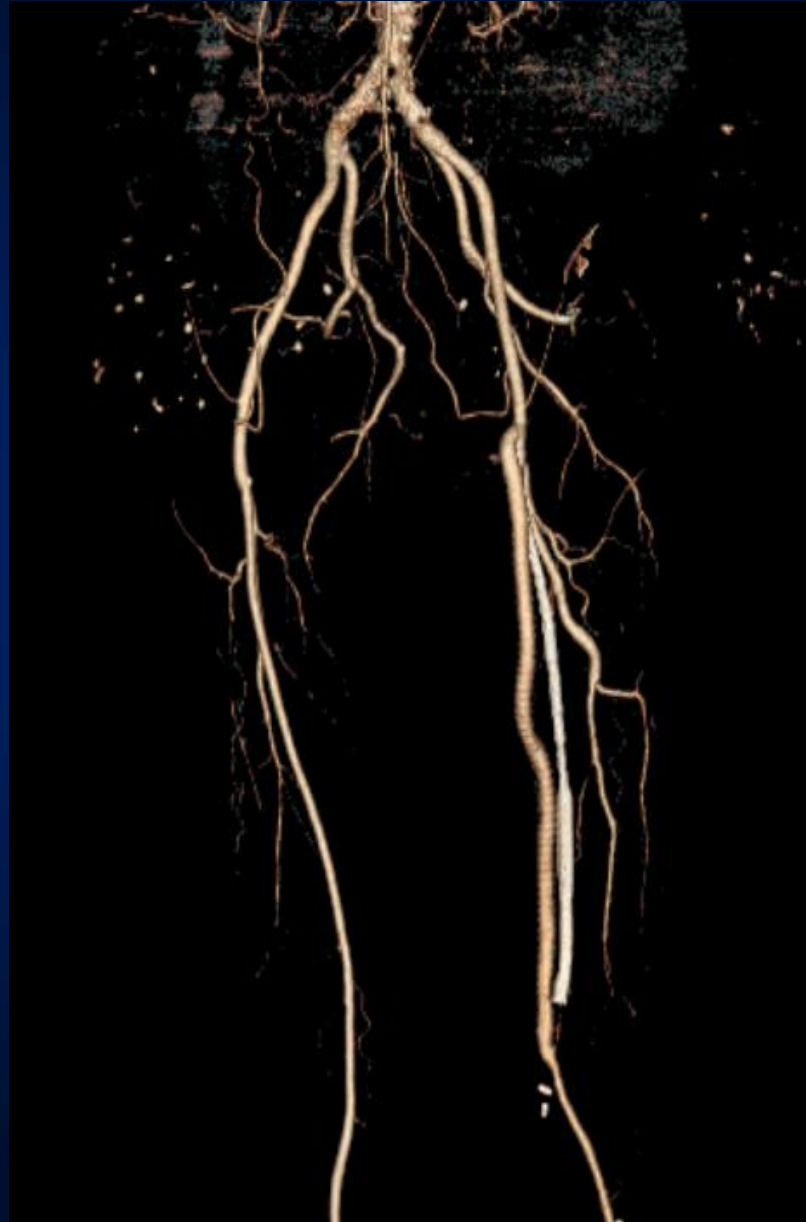
# Crushed stent...???

After meticulous history taking



동네 정형외과 갔더니 관절에 좋다고 그래서 했는데 하  
고 나니 다음 날부터 다리가 너무 아프더라.....

# Fem to pop bypass surgery



[Home](#)[Current Issue](#)[All Issues](#)[Online Before Print](#)[Topic Collections](#)

[Volume 7, Issue 10, October 2014 >](#)

**Images In Intervention** | October 2014

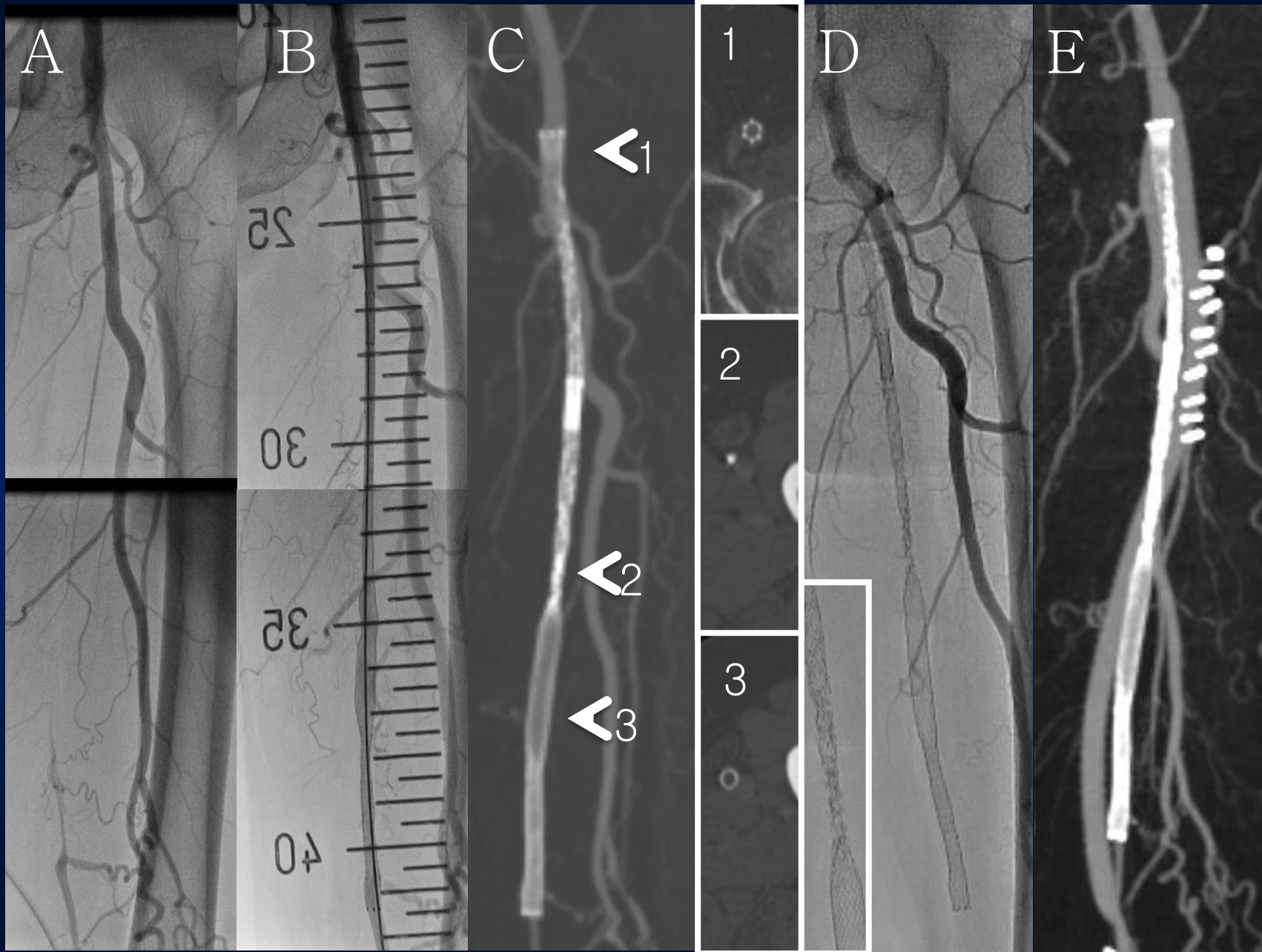
## Crushed Stent With Acute Occlusion in Superficial Femoral Artery After Enhanced External Counterpulsation

Yongsung Suh, MD\*; Young-Guk Ko, MD\*; Seung Hyun Lee, MD, PhD<sup>†</sup>; Man-Deuk Kim, MD, PhD<sup>‡</sup>; Donghoon Choi, MD, PhD\*

[\[+\] Author Information](#)

*J Am Coll Cardiol Interv.* 2014;7(10):e141-e142. doi:10.1016/j.jcin.2014.02.023





*Yonsei University Health System*



*Severance Cardiovascular Hospital*



**Thank  
You  
for Your  
Attention!**

