

Evolution of the Clinical Trial Consortium in South Korea



KoNECT

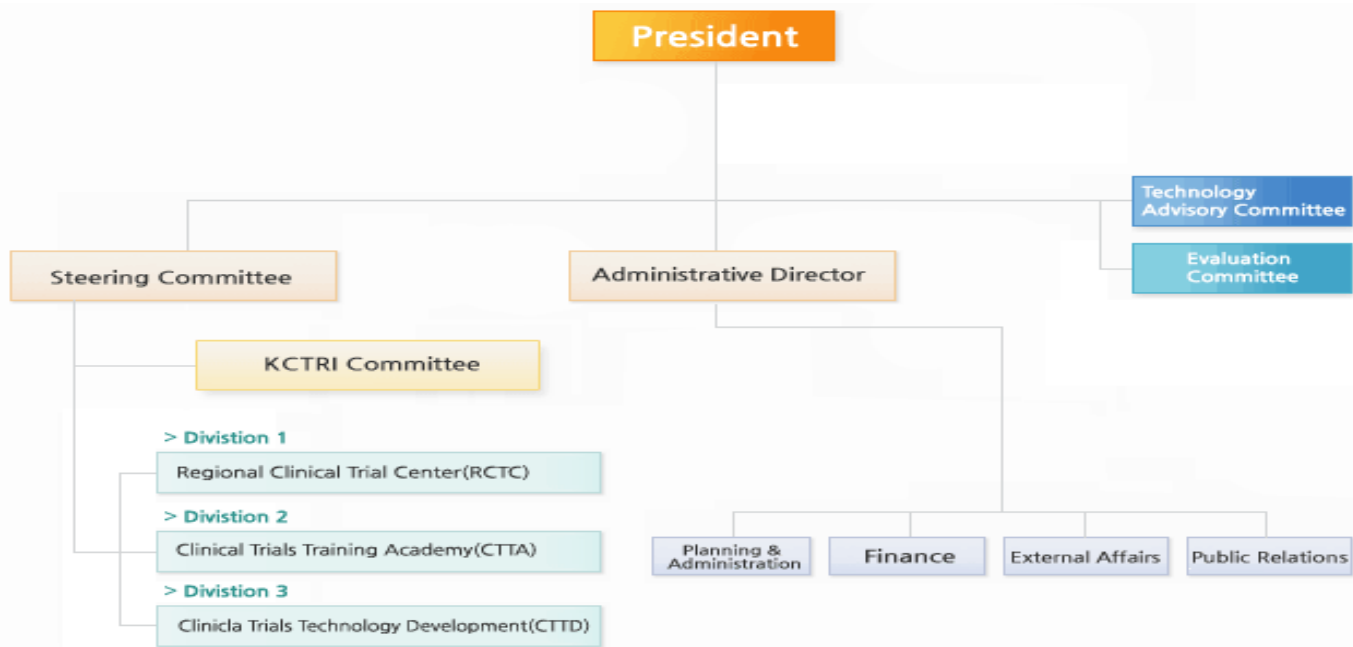
Korea National Enterprise for Clinical Trials
(제) 한국임상시험산업본부



Korea, The Hub of Global Clinical Trials

KoNECT was established in December 2007 with wholehearted support from the Korean government, academics and related business industries in order to meet the increasing demands for clinical trials and to strengthen the national capability by fostering professionals, core technologies and infrastructure.

> Introduction of KoNECT



*** International Technical Advisory Committee**

Prof. Nadarajah Sree Haran
Dr. Adam Cohen
Prof. Kyoichi Ohashi
Prof. Masahiro Takeuchi

CEO, Center for Human Drug Research
 Oita University
 School of Pharmaceutical Sciences Division of Biostatistics &
 Division of Pharmaceutical Medicine
 CEO & Managing Director, Agenix
 Head of Clinical Pharmacology, Primary Care Business Unit,
 Pfizer Global Research & Development

Dr. Stephen Phua
Dr. Richard L. Lalonde

Prof. Trevor M. Jones
Prof. Stuart R. Walker

Founder & Vice President, CMR

KOREAN REGIONAL CLINICAL TRIAL CENTERS



- Seoul National University Hospital Clinical Trials Center
- Inje University Busan Paik Hospital Clinical Trial Center
- Kyungpook National University Hospital Clinical Trial Center
- Ajou University Medical Center Regional Clinical Trial Center
- Yonsei University Health System Clinical Trials Center
- Chonnam National University Hospital Clinical Trial Center
- Catholic Medical Center Clinical Research Coordinating Center
- Asan Medical Center Clinical Research Center
- Chonbuk National University Hospital Clinical Trial Center
- Samsung Medical Center Clinical Trial Center
- Inha University Hospital Clinical Trial Center
- Chungnam National University Hospital Clinical Trials Center
- Korea University Anam Hospital Clinical Trial Center
- Dong-A University Hospital Clinical Research Center

SMO vs. ARO





KoNECT

(Korea National Enterprise for
Clinical Trials)

KCGI

(Korea Clinical trials Global
Initiative)

CTC Support

- Sharing and pooling of resources between CTC's
- Planning for supporting newly established CTC's
- Sharing of information and best practices

Clinical Trials Information Center

- DB for clinical trials information (investigators, subjects, trial designs, IND approval status, etc)
- Establishing investigators network for attracting studies

Joint Global Marketing

- Joint marketing efforts e.g. public relations activities through media and meetings
- Participation in domestic and overseas research organizations networks

MOHW

KHIDI

KCGI

KoNECT

GCE

Tech.Dev

**Strategic
Planning**

HR.Dev

CRO.Support

CT.Info

**BD &
Marketing**

Global Centers of Excellence Projects

PI Institution	Consortium Participants	Project Duration
Seoul National Univ Hospital	Seoul National Univ Hospital Seoul National Univ Bundang Hospital Chonbuk Univ Hospital	2012.11-2017.03
Seoul Asan Hospital	Seoul Asan Hospital Ajou Univ Hospital	2012.11-2017.03
Yonsei Univ Health System	Yonsei Univ Severance Hospitals Catholic Univ Seoul St. Mary's Hospital Inha Univ Hospital	2013.11-2018.03
Inje Univ Busan Baik Hospital	Inje Univ Busan Baik Hospital Donga Univ Hospital Chungnam Univ Hospital	2013.11-2018.03
TBD	TBD	2014.11-2019.03

STRATEGY

	Capabilities	Environment	BD	Network
Specialization	<ul style="list-style-type: none">• Early phases special studies• Experts and staff specialized in certain areas	<ul style="list-style-type: none">• Specialists in selected TA• Special functions, facilities and equipment	<ul style="list-style-type: none">• ARO services• IIT support (incl. RA)• Comprehensive consulting services for drug development	<ul style="list-style-type: none">• Expand overseas network• TA-specific collaborative models
Collaboration	<ul style="list-style-type: none">• Multicenter trials infrastructure and systems• SOP standardization (harmonization)• Feasibility DB	<ul style="list-style-type: none">• Support of acquisition of international HRPP accreditation• QM(QA/QC)• IRB review processes	<ul style="list-style-type: none">• Industry-academia collaboration ecosystem• PM reinforcement	<ul style="list-style-type: none">• Global marketing• Joint effort at a national level

- 1000 beds
- 400 MD's
- cover all major therapeutic areas
- believe in collaboration

→ collaborative efforts?





THE REACTAFORUM

REGIONAL ASIAN CLINICAL TRIAL ASSOCIATION ANNUAL FORUM

Keys OBJECTIVES:

- Share information
- Create a new global standard
- Global competitiveness
- Extramural funding
- Political Cohesiveness





THEREACTAFORUM 2013
THE EAST ASIAN CLINICAL TRIAL FORUM

Sharing
Insights

September 13th

BEXCO AUDITORIUM BUSAN, SOUTH KOREA



“To promote global standards and competitiveness at clinical trial centers in Asia for the benefit of industry, academia and governments, and to accelerate medical research to help patients receive the medicines they need.”



**THANK
YOU!**





ABGI

DAUH

Collaboration